

YANMAR LAWN MOWER

PARTS CATALOG

NPC-2992



MODEL

**YL630T
YL630TS**

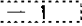
YOUR PARTS ORDERING

- When placing your parts order with us, Please contact us upon confirming the Model, Part No, Description and Qty of the parts you want to order by this parts catalog.
First look for the illustration of the part you want. Then you can find out the necessary informations by tracing the illustration No., as each illustration corresponds to the parts list on the following page.
- All parts the illustrations of which are not numbered shall not be sold separately.
- You are asked to prepare parts, especially consumable parts in the demand season earlier, as orders will come with a rush in this season.
- Parts other than those due to misshipping on your part shall not be allowed to returned in principle.
- Please surely use **YANMAR** Genuine Parts in any **YANMAR** Product.
(Use of similar goods (parts) on the market causes earlier damage or worsening of performance.)

HOW TO READ THIS PARTS CATALOG

- In the case where a Ref. No. given in the list does not agree with the corresponding Sketch No. in illustration (no suffix number as shown below), an illustration for such a New Part has been omitted only in the case of a parts change for which Interchangeability Symbol N, R or K is given.

[Example]

Sketch No. in Illustration	Ref. No. in List	
1	1	(Before the change)
	1 	(After the change)
2	2	

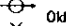
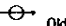
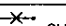
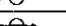
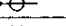
- Indication and meaning of level
Level

-A number of dots indicated is called the level which refers to the assembly-component relation of an assembly part.
(* refers to an assembly part.)
-Refers to a component included in an assembly part indicated by one dot (*).
-Refers to a component included in a complete part indicated by two dots (**).
(It indicates a sub-component of pertinent assembly part indicated by one dot (*).)

- Indication and meaning of interchangeability symbol

(Given under the column "I" next to the quantity column in the list)

In the case where a parts change took place, one of the following interchangeability symbols is indicated for that part:

Symbol	Interchangeability	Contents note
N	New  Old	New Part is interchangeable for Old Part but not interchangeable conversely.
P	New  Old	Same as symbol N but supply of Old Part is suspended and New Part is sold in the future.
Q	New  Old	New Part is not interchangeable for Old Part but interchangeable conversely.
R	New  Old	New Part is interchangeable for Old Part and vice versa.
S	New  Old	New Part is not interchangeable for Old Part and vice versa.
W		Part newly added.
Z		Part discontinued.
F		Not interchangeable by single part but interchangeable by set of the related parts.
K		Changed only in quantity used.

- Remarks (column "R" given at the right end of the list)
9-1) A numerical or alphabetic character (symbol) may be indicated under the column "R".
9-2) A comment (remarks) for a part in question is given at the lower part of the list, following a symbol identical to the aftermentioned symbol when a symbol is indicated under the column "R".
- Virtual No. in illustration
A Sketch No. in illustration containing an encircled numeral indicates other related Group No.

[Example]

③ - 1	Group No. 3	} indicated.
	Ref. No. 1	

- Change Effective Machine No.

When a part is changed, a Change Effective Machine No. of such a model for which a New Part is applied is indicated as follows:

[Example] Model columns A ~ F

(Model indication is given in two kinds, namely, 4-model and 6-model indications.)
correspond to A ~ F in front of Change Effective Machine No..

4-model Indication

(A) =
(B) =
(C) =
(D) =

6-model Indication

(A) =	(D) =
(B) =	(E) =
(C) =	(F) =

[Example] A=F610001 B=F612001

Model column A indicates that a parts change is put into effect from Machine No. 610001 and on. And moreover Model column B indicates that a parts change is put into effect from Machine No. 612001 and on.

[Classification]

E Engine No.	} indicated.
F Machine Body No.	
R Rotary Unit No.	

- Additional Group No. found in the Revised Edition

Kindly understand that a Group No. other than consecutive numbers has been entered in the case where the corresponding Group is added within the pertinent Section.

[Example]

Section

BODY SECTION

Group No. Group name

- 46. ENGINE FIXTURE & BATTERY
- 47. FRAME & HYDRAULIC PUMP
- 48. BEVEL GEAR CASE
- 49. TRANSM. CASE & RUNNING CLUTCH
- 50. CONTROL LEVERS
- 51. CRAWLER

64. ENGINE FIXTURE & BATTERY (Group added for the YSR1300-N)

65. CONTROL LEVERS (Group added for the YSR1300-N)

SNOW REMOVAL SECTION

52. CHUTE

53. SNOW REMOVAL FRAME & BLOWER

Additional Groups are indicated.

Owing to the improvement of **YANMAR** Product involved or its parts, the contents of this Parts Catalog may be altered without prior notice to you.

SPECIFICATIONS

Model		YL630T	YL630TS
Dimensions	Length (mm)	1640	
	Width (mm)	580	
	Height (mm)	1030	
Weight (dry)	(Kg)	45	48
Engine	Model	FC180V	
	Type	OHV, 4-CYCLE, VERTICAL GASOLINE	
	Displacement (cc)	182	
	Max. output (PS/rpm)	5.5/4000	
	Ignition	Transistorized magnet	
	Starting system	Recoil	
	Fuel tank capacity (ℓ)	2.7	
	Lubrication system	Forced spray type	
	Oil capacity (ℓ)	0.65	
	Air cleaner	Dual element type	
Travelling section	Speed change	Selective sliding mesh	
	Travelling speed	Low (m/s)	0.7
		High (m/s)	1.2
	Primary travelling drive	PTO shaft	
	Final drive	Gear	
Wheel differential	One-way clutch		
Mowing section	Mowing width (mm)	530	
	Mowing height (Adjustment) (mm)	15-85 (6-steps)	
	Brake clutch system(Safety clutch)	NO	Dry type single disk
	Catcher bag capacity (ℓ)	73	
	Front protector	Equipped as standard	
Handle	Handle height (Adjustment) (mm)	885, 995, 1075 (3-steps)	
	Handle fixing	Bolts	
Wheels	Wheel size (Front, Rear) (mm)	202(dia.) x 55(width)	
	Materials	Special strengthened wheel with glass fiber	

PAINTING COLOR

SECTION	PAINTING COLOR	COLOR SPRAY	MAIN PARTS	COLOR CODE (FIGURE)
Main body	YANMAR Plain silver M2	T:O:R-9:0:3:1:0:0:0:3	Blade casing	1 9
Main body	YANMAR Black	T:O:R-9:0:2:2:0:0:0:3	Glass guide front	1 2

Please surely use **YANMAR** Genuine color spray any **YANMAR** agricultural machines.

Given painting color may be altered for improvement, etc. without prior notice.

CONTENTS

YOUR PARTS ORDERING

SPECIFICATIONS

PAINTING COLOR

ENGINE UNIT(FC180V)

GROUP NO. GROUP NAME

1. CYLINDER & CRANKCASE
2. PISTON & CRANKSHAFT
3. VALVES & CAMSHAFT
4. LUBRICATING SYSTEM
5. COOLING DEVICE
6. ELECTRICAL PARTS
7. CONTROLLING DEVICE
8. CARBURETOR
9. AIR FILTER & MUFFLER
10. FUEL TANK & FUEL VALVE
11. STARTER
12. LABELS & ACCESSORIES

ENGINE RELATION UNIT

1. ENGINE RELATED & CLUTCH

DRIVE UNIT

2. INPUT
3. GEAR CASE

WHEEL UNIT

4. WHEELS
5. AXLE

REAPING UNIT

6. BLADE, FAN & CATCHER

HANDLE UNIT

7. HANDLE
8. LEVER WIRE

FRAME UNIT

9. CASING & COVERS
10. SCRAPER & GUIDE

LABELS, TOOL & ACCESSORIES UNIT

11. LABELS
12. TOOLS

PARTS INDEX

PARTS INDEX

LABELS, TOOL & ACCESSORIES UNIT

FRAME UNIT

HANDLE UNIT

REAPING UNIT

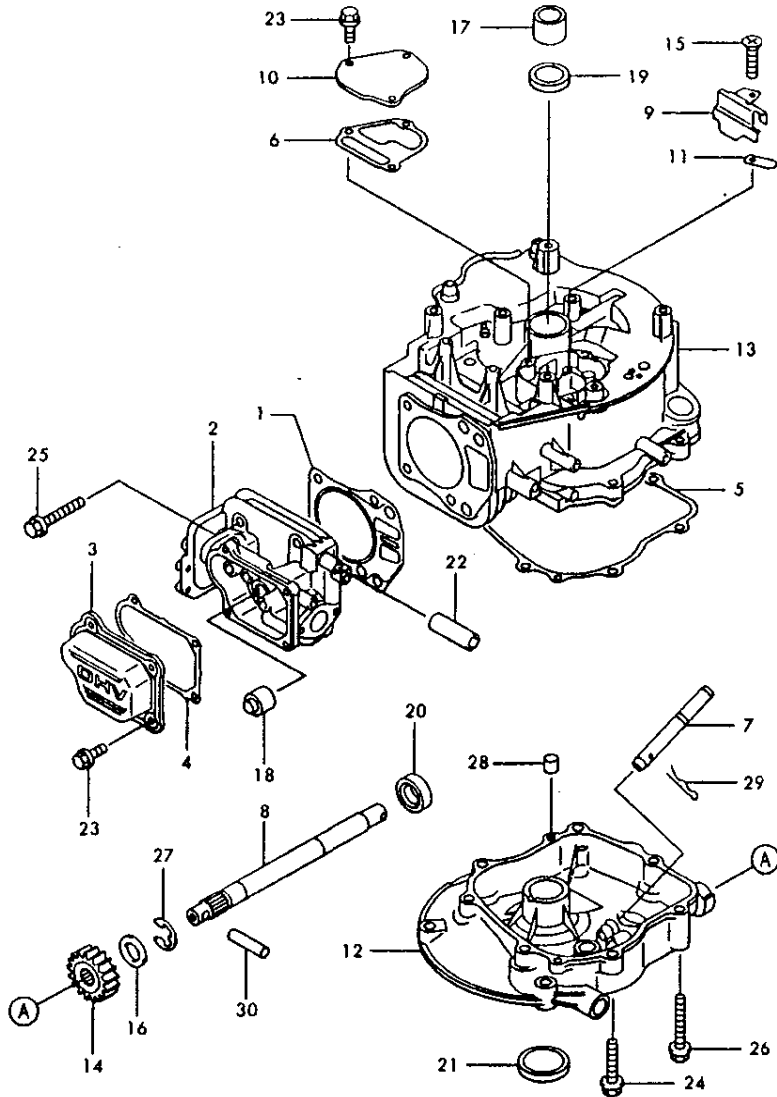
WHEEL UNIT

DRIVE UNIT

ENGINE RELATION UNIT

ENGINE UNIT(FC180V)

1. CYLINDER & CRANKCASE



N088362

↑-----↑
 1803
 (1802)
 ↑-----↑
 NPC-3022

1. CYLINDER & CRANKCASE

93.02.18

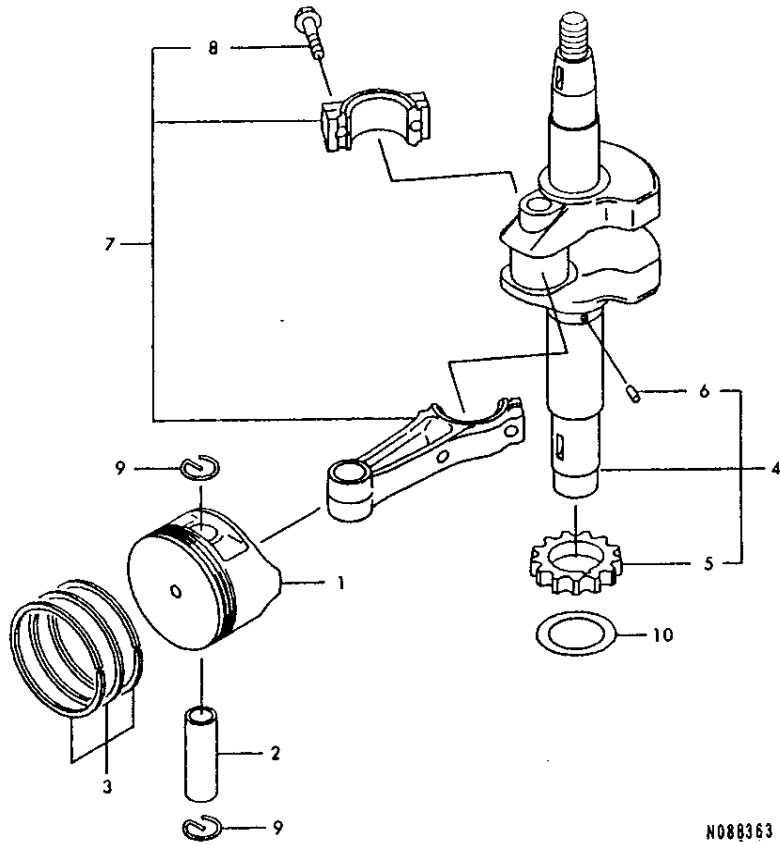
(A)=FC180V (D)=
 (B)= (E)=
 (C)= (F)=

REF. NO.	LEV. 0	PART NO.	DESCRIPTION	-----Q'TY-----						I	P	U	A	R
				(A)	(B)	(C)	(D)	(E)	(F)					
1	.	121100-42117	GASKET-HEAD	1										
2	.	121100-82097	HEAD-COMP-CYLINDER	1										
3	.	121102-22067	CASE-ROCKER	1										
4	.	121106-02139	GASKET,ROCKER CASE	1										
5	.	121106-02142	GASKET	1										
6	.	121106-02143	GASKET	1										
7	.	121310-72255	SHAFT	1										
8	.	121310-72256	SHAFT	1										
9	.	121318-32504	PLATE	1										
10	.	121409-02032	COVER	1										
11	.	121612-62146	VALVE	1										
12	.	124901-52291	COVER-CRANKCASE	1										
13	.	124912-06074	CRANKCASE-COMP	1										
14	.	125905-62790	GEAR-HELICAL	1										
15	.	129200-92166	SCREW,5X8	1										
16	.	129202-21236	WASHER,12.2X20X1.6	1										
17	.	125501-42110	BUSHING	1										
18	.	129204-91062	SEAL-OIL	1										
19	.	129204-92199	SEAL-OIL	1										
20	.	129204-92204	SEAL-OIL	1										
21	.	129204-92210	SEAL-OIL	1										
22	.	129219-02112	TUBE,12X16X46	1										
23	.	26106-060122	BOLT-FLANGED	7										
24	.	121306-08350	BOLT-FLANGED	4										
25	.	121306-08450	BOLT-FLANGED	4										
26	.	26106-080502	BOLT-FLANGED	3										
27	.	12482J-90000	CIRCLIP-TYPE-E	1										
28	.	120056-06120	PIN-DOWEL	2										
29	.	22372-060000	PIN-SNAP	1										
30	.	12555A-D5160	PIN-SPRING	1										

----- REMARKS -----
 * 721071-1102D 12555A 52E. (* 721071-1102D ENGINE ASSY.

N088362

2. PISTON & CRANKSHAFT



N088363

2. PISTON & CRANKSHAFT

93.02.18

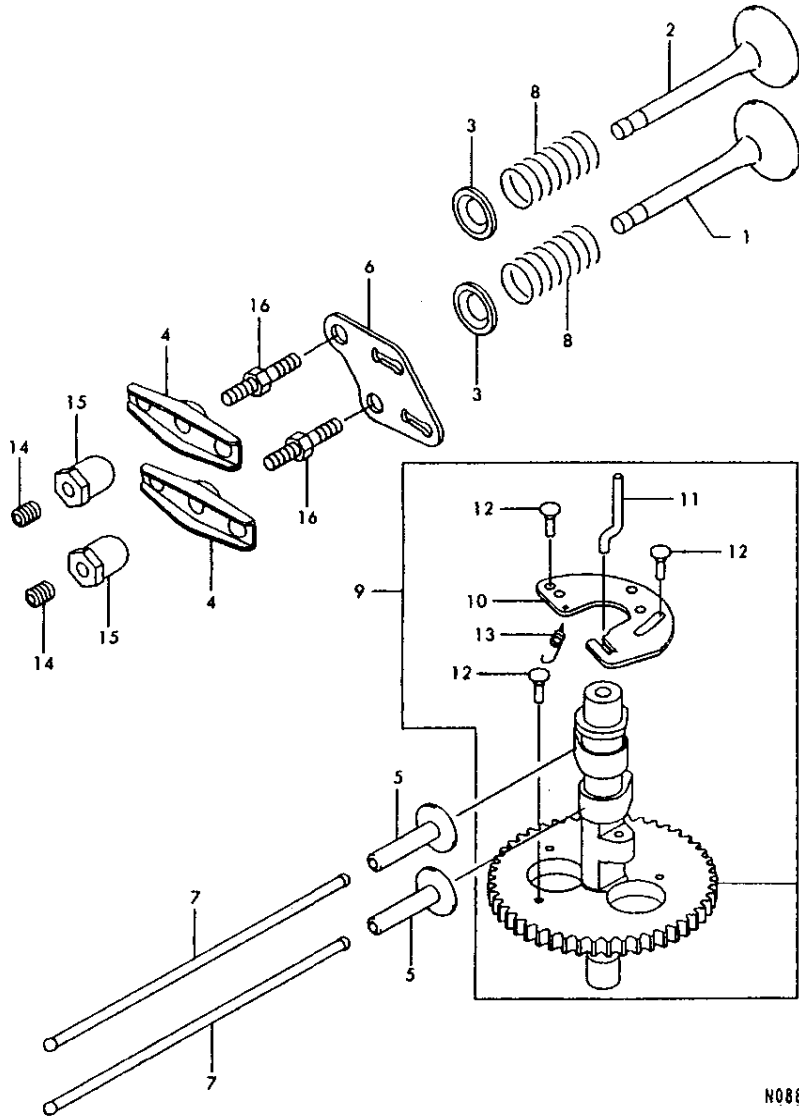
↑-----↑
 | 1804 |
 | (1802) |
 ↓-----↓
 NPC-3022

(A)=FC180V (D)=
 (B)= (E)=
 (C)= (F)=

REF. NO.	LEV. 0	PART NO.	DESCRIPTION	-----Q'TY-----						I	P/U	A	R
				(A)	(B)	(C)	(D)	(E)	(F)				
1	.	121300-12134	PISTON-ENGINE	1									
2	.	121300-21004	PIN-PISTON	1									
3	.	121300-86029	RING-SET-PISTON	1									
4	.	121303-12078	CRANKSHAFT-COMP	1									
5	..	125905-12330	GEAR-SPUR	1									
6	..	12551A-03060	PIN-DOWEL	1									
7	.	121325-16052	ROD-ASSY-CONNECTING	1									
8	..	129215-02122	BOLT,CONNECTING ROD	2									
9	.	125801-31220	RING-SNAP	2									
10	.	129220-02058	WASHER,28X40X0.5	1									

N088363

3. VALVES & CAMSHAFT



↑-----↑
 ↑ 1805 ↑
 ↑ (1802) ↑
 ↑-----↑
 NPC-3022

3. VALVES & CAMSHAFT

93.02.18

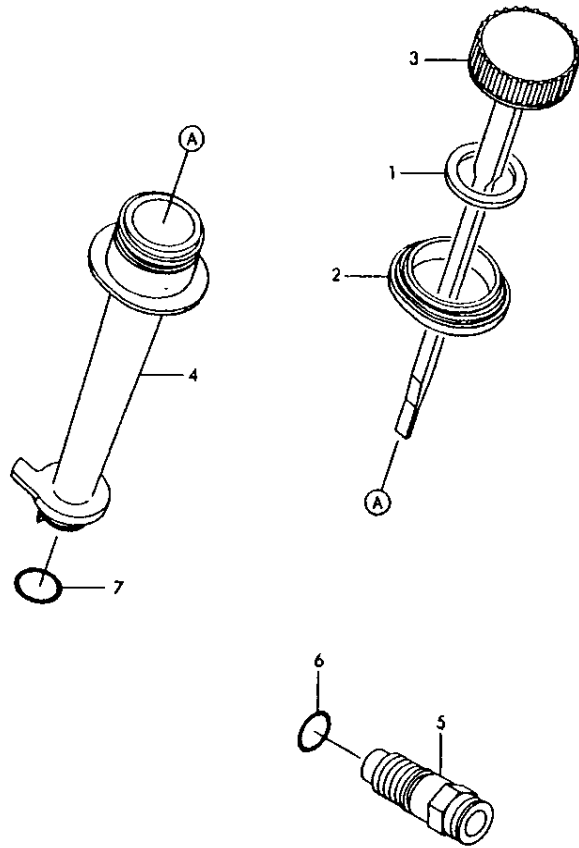
(A)=FC180V (D)=
 (B)= (E)=
 (C)= (F)=

REF. NO.	LEV. 0	PART NO.	DESCRIPTION	-----Q'TY-----						I	P/U	A	R
				(A)	(B)	(C)	(D)	(E)	(F)				
1	.	121200-42101	VALVE-INTAKE	1									
2	.	121200-52089	VALVE-EXHAUST	1									
3	.	121200-92062	RETAINER-VALVESPRING	2									
4	.	121201-62057	ARM-ROCKER	2									
5	.	121203-22065	TAPPET	2									
6	.	121307-02091	GUIDE	1									
7	.	121311-62065	ROD-PUSH	2									
8	.	124907-82064	SPRING-ENGINE VALVE	2									
9	.	124911-82110	CAMSHAFT-COMP	1									
10	..	121304-22088	WEIGHT	1									
11	..	122108-32075	ARM	1									
12	..	129204-32168	PIN	3									
13	..	129214-42315	SPRING	1									
14	.	129200-92341	SCREW	2									
15	.	129201-52253	NUT	2									
16	.	129215-02248	BOLT	2									

N088364

N088364

4. LUBRICATING SYSTEM



NO88365

↑-----↑
 1 1806 1
 1 1802 1
 ↑-----↑
 NPC-3022

4. LUBRICATING SYSTEM

93.02.18

(A)=FC180V (D)=
 (B)= (E)=
 (C)= (F)=

REF. NO.	LEV. 0	PART NO.	DESCRIPTION	-----Q'TY-----						I	P/U	A	R
				(A)	(B)	(C)	(D)	(E)	(F)				
1	.	121100-92346	GASKET,OIL GAUGE	1									
2	.	121307-02092	GUIDE	1									
3	.	125200-52094	GAUGE,OIL	1									
4	.	125923-12077	FILLER	1									
5	.	129206-62180	PLUG	1									
6	.	126700-20150	O RING	1									
7	.	126700-20160	O RING	1									

NO88365

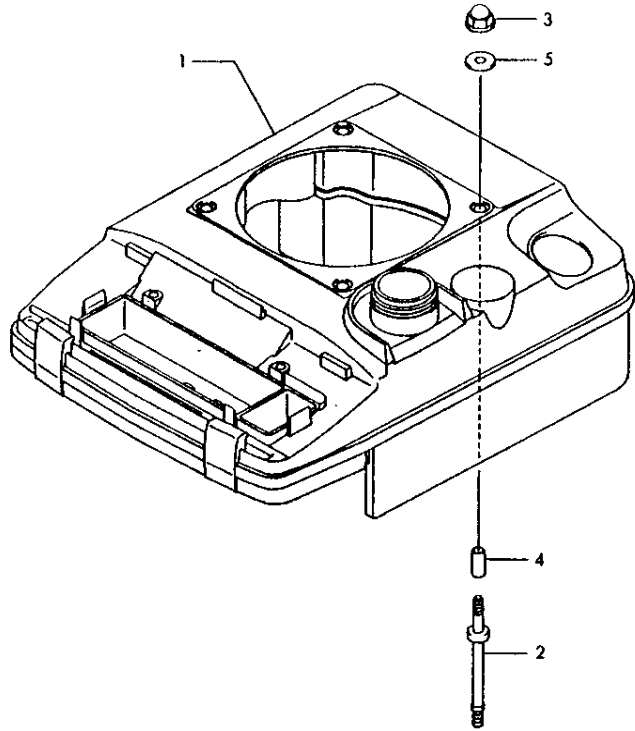
5. COOLING DEVICE

↑-----↑
 1 1807 1
 1 1802 1
 ↑-----↑
 NPC-3022

5. COOLING DEVICE

(A)=FC180V (D)=
 (B)= (E)=
 (C)= (F)=

93.02.18



REF. NO.	LEV. 0	PART NO.	DESCRIPTION	-----QTY-----						P/U	A	R
				(A)	(B)	(C)	(D)	(E)	(F)			
1	.	121409-02033	COVER	1								
2	.	119200-42135	STUD	4								
3	.	129201-51170	NUT	4								
4	.	129202-62273	SPACER, 6.2X7.8X17	4								
5	.	129220-02037	WASHER, 6.5X18X2.0	4								

N088366

N088366

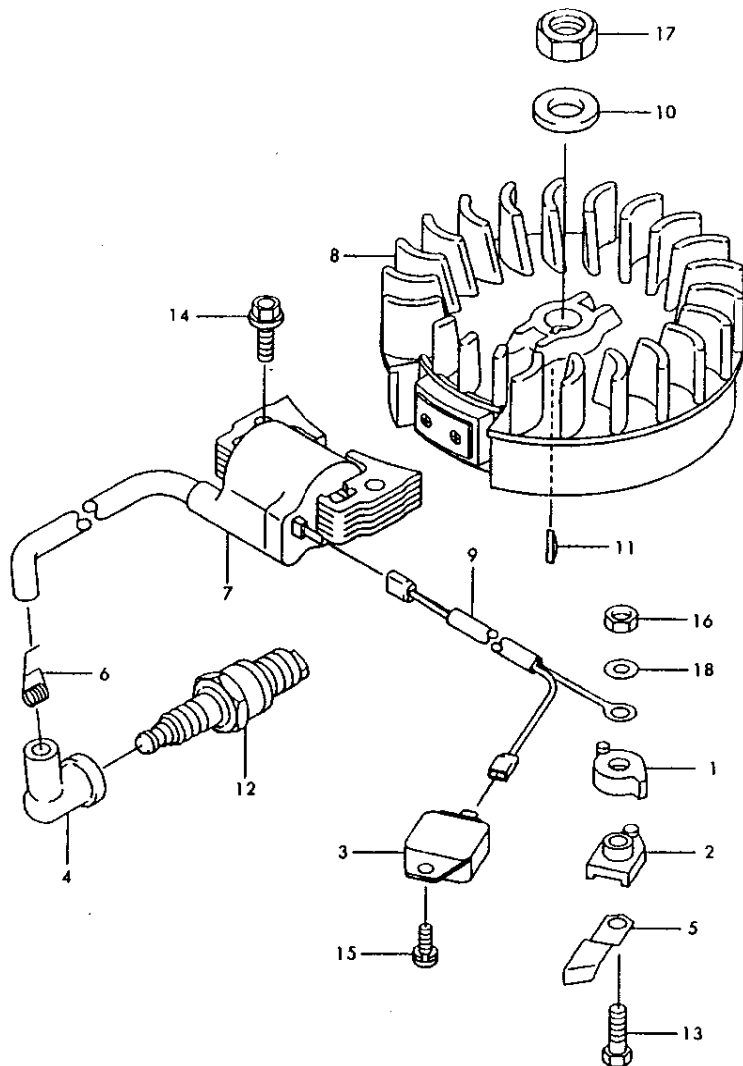
6. ELECTRICAL PARTS

6. ELECTRICAL PARTS

93.02.18

+-----+
 (1808)
 (1802)
 +-----+
 NPC-3022

(A)=FC180V (D)=
 (B)= (E)=
 (C)= (F)=

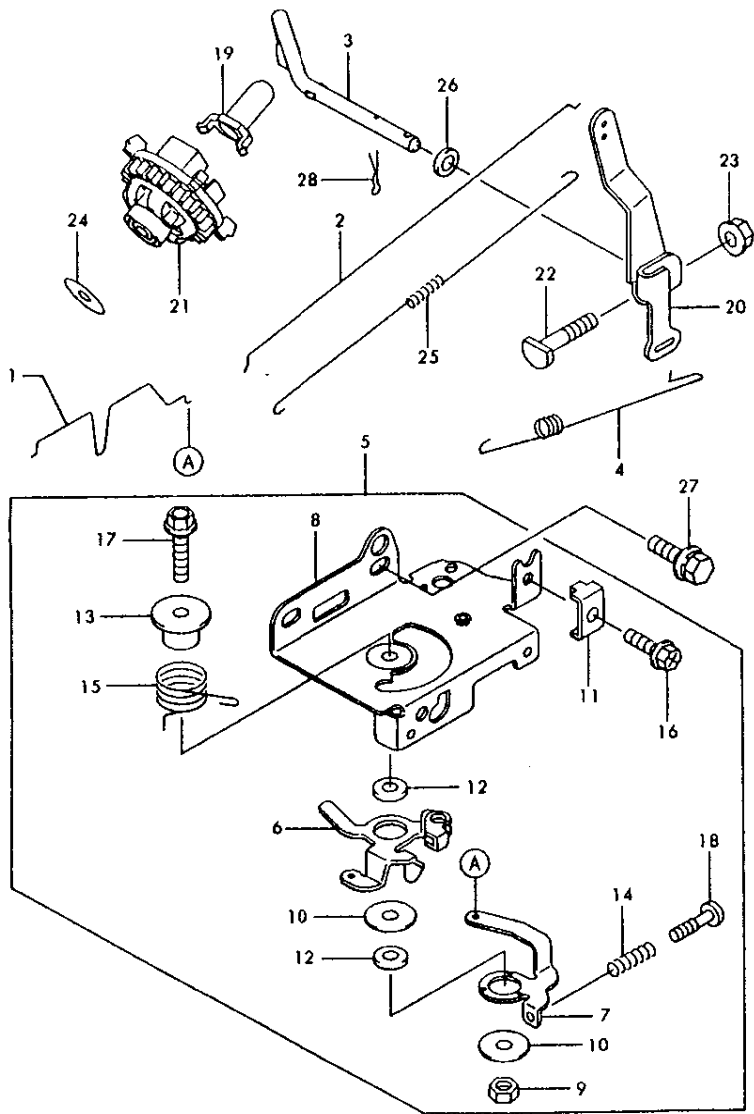


REF. NO.	LEV. 0	PART NO.	DESCRIPTION	Q'TY						I	P	U	A	R
				(A)	(B)	(C)	(D)	(E)	(F)					
1	.	121402-42183	COVER	1										
2	.	121607-32165	INSULATOR	1										
3	.	122111-92139	IGNITER	1										
4	.	122113-02066	CAP-SPARK PLUG	1										
5	.	122116-92066	TERMINAL	1										
6	.	127270-84190	TERMINAL	1										
7	.	122117-12176	COIL-ASSY-IGNITION	1										
8	.	122119-42249	FLYWHEEL-COMP	1										
9	.	122601-12297	WIRE-LEAD	1										
10	.	124401-34820	WASHER	1										
11	.	129203-82077	KEY	1										
12	.	129207-01167	PLUG-SPARK, BP5ES'NGK	1										
13	.	12110B-05220	BOLT-FLANGED	1										
14	.	12130G-06250	BOLT-FLANGED	2										
15	.	26022-040082	SCREW-PAN-WP+-	1										
16	.	12311B-05000	NUT-HEX	1										
17	.	26737-140002	NUT-HEX-FINE	1										
18	.	22117-050000	W-PLAIN-S	1										

N088367

N088367

7. CONTROLLING DEVICE



N088368

↑ 1809 ↓
 ↑ 1802 ↓
 ↑ --- ↓
 NPC-3022

7. CONTROLLING DEVICE

93.02.18

(A)=FC180V (D)=
 (B)= (E)=
 (C)= (F)=

REF. NO.	LEV. 0	PART NO.	DESCRIPTION	Q'TY						I	P/U	A	R
				(A)	(B)	(C)	(D)	(E)	(F)				
1	.	121616-92111	LINK-CHOKE	1									
2	.	121617-12068	LINK	1									
3	.	123900-32077	ARM-PIVOT	1									
4	.	123912-92054	SPRING-GOVERNOR	1									
5	.	123918-02796	PANEL-ASSY-CONTROL	1									
6	..	121316-82352	LEVER	1									
7	..	121316-82353	LEVER	1									
8	..	125922-62256	PANEL-CONTROL	1									
9	..	124401-53850	NUT	1									
10	..	129202-22372	WASHER,6X19X1.2	2									
11	..	129203-72209	CLAMP	1									
12	..	129214-32135	COLLAR,6X13X2.3	2									
13	..	129214-32148	COLLAR	1									
14	..	129214-42266	SPRING	1									
15	..	129214-42316	SPRING	1									
16	..	129215-02182	BOLT,5X18	1									
17	..	121308-06300	BOLT-FLANGED	1									
18	..	122148-04200	SCREW-PAN+-	1									
19	.	124401-51211	SLEEVE	1									
20	.	124910-32127	ARM-GOVERNOR	1									
21	.	124911-02080	GOVERNOR-ASSY	1									
22	.	129200-22269	BOLT	1									
23	.	129201-51193	NUT	1									
24	.	124401-51350	WASHER	1									
25	.	129214-42329	SPRING	1									
26	.	129220-02029	WASHER,6.5X11.5X2.0	1									
27	.	120016-06140	BOLT-UPSET-WSP	2									
28	.	22372-060000	PIN-SNAP	1									

N088368

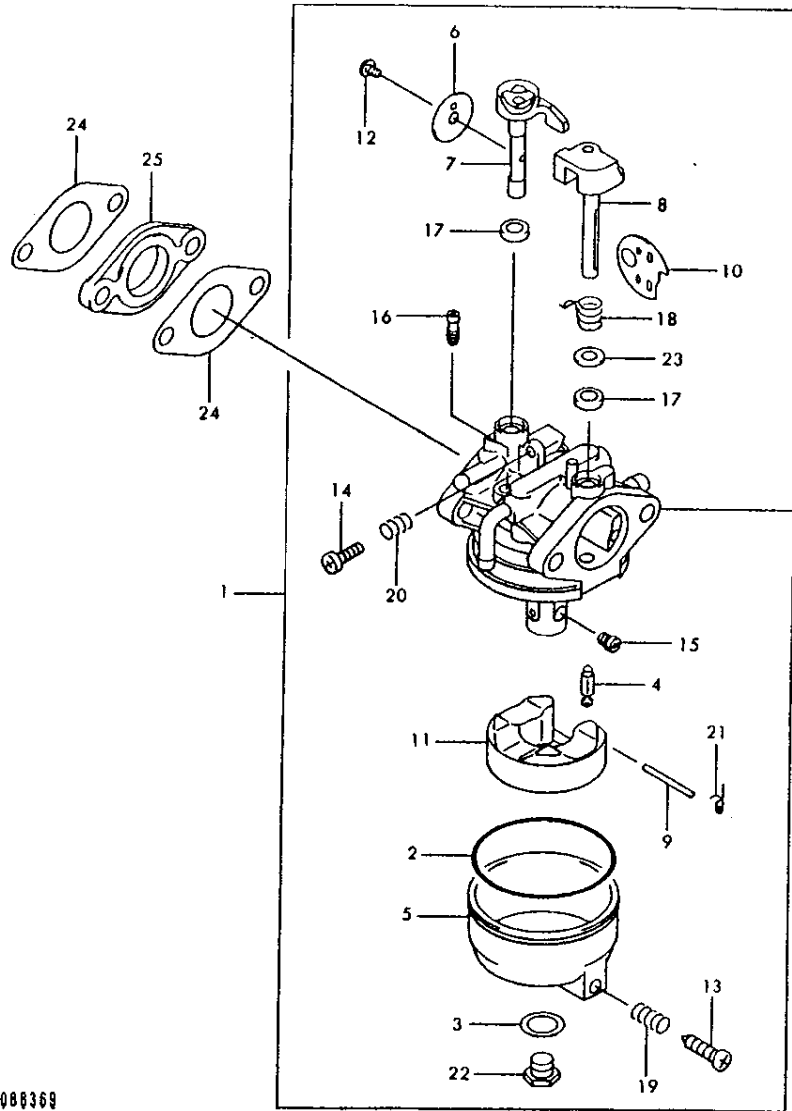
8. CARBURETOR

1810
1802
NPC-3022

8. CARBURETOR

93.02.18

(A)=FC180V (D)=
(B)= (E)=
(C)= (F)=

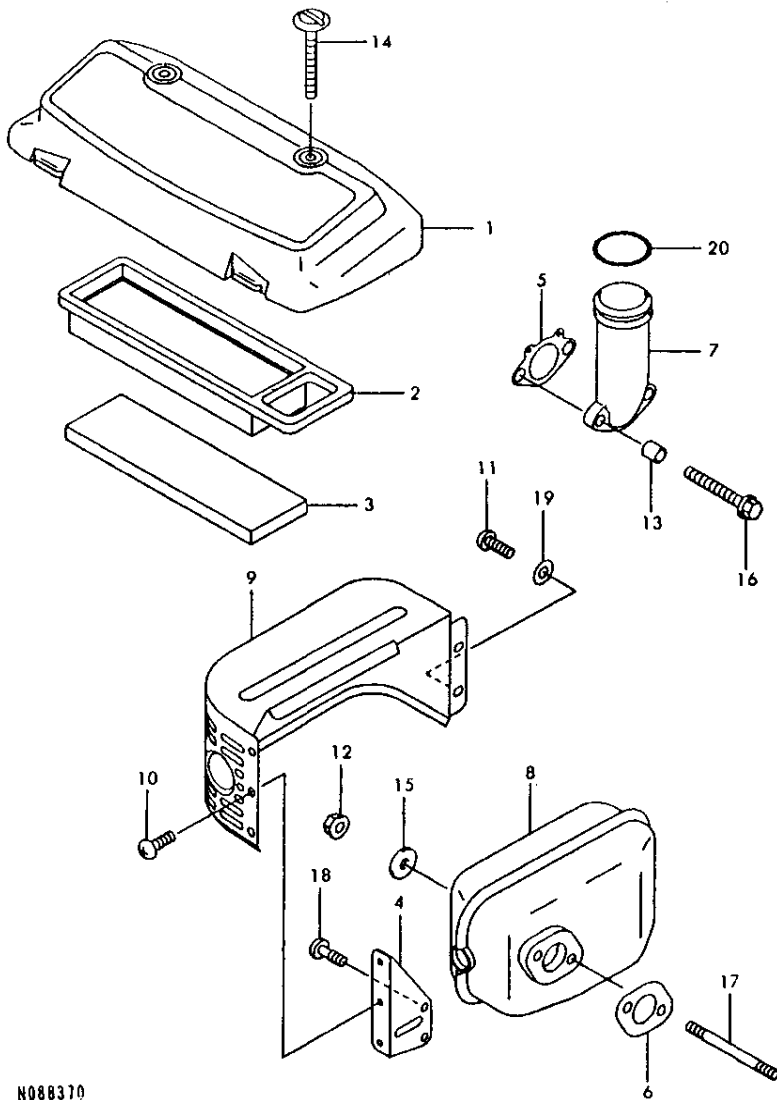


REF. NO.	LEV. 0	PART NO.	DESCRIPTION	-----Q'ITY-----						I	P	U	A	R
				(A)	(B)	(C)	(D)	(E)	(F)					
1	..	121500-32227	CARBURETOR-ASSY	1										
2	..	121106-02190	GASKET	1										
3	..	121106-02191	GASKET	1										
4	..	121600-92136	NEEDLE-JET	1										
5	..	121602-02129	CHAMBER-FLOAT	1										
6	..	121602-52166	VALVE-THROTTLE	1										
7	..	121604-12222	SHAFT	1										
8	..	121604-12223	SHAFT	1										
9	..	121604-12224	SHAFT	1										
10	..	121612-62191	VALVE,CHOKE	1										
11	..	121618-32002	FLOAT-ASSY	1										
12	..	122301-32058	SCREW-ASSY	1										
13	..	129200-92348	SCREW	1										
14	..	129200-92349	SCREW	1										
15	..	129206-32242	JET-MAIN	1										
16	..	129206-42094	JET-PILOT	1										
17	..	129209-32100	SEAL	2										
18	..	129214-42332	SPRING	1										
19	..	129214-42333	SPRING	1										
20	..	129214-42334	SPRING	1										
21	..	129214-42335	SPRING	1										
22	..	129215-02263	BOLT	1										
23	..	129220-02061	WASHER,9.8X5.5X1.0	1										
24	..	121106-02144	GASKET,CARBURETOR	2										
25	..	121607-32164	INSULATOR	1										

N088369

N088369

9. AIR FILTER & MUFFLER



N088370

↑-----↑
 | 1811 |
 | (1802) |
 ↑-----↑
 NPC-3022

9. AIR FILTER & MUFFLER

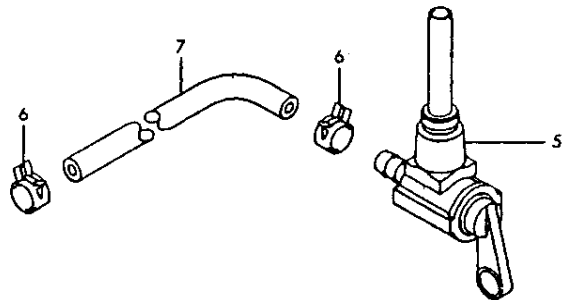
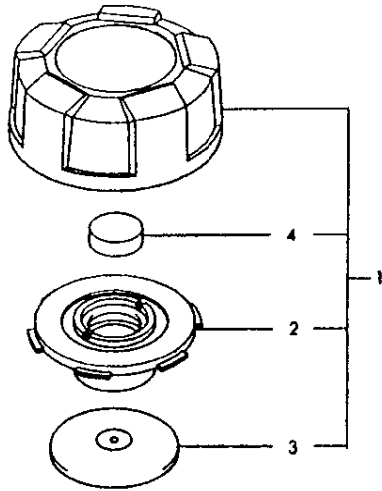
93.02.18

(A)=FC180V (D)=
 (B)= (E)=
 (C)= (F)=

REF. NO.	LEV. 0	PART NO.	DESCRIPTION	Q'TY						I	P/U	A	R
				(A)	(B)	(C)	(D)	(E)	(F)				
1	.	121101-22327	CAP,AIR FILTER	1									
2	.	121101-32151	ELEMENT-AIR FILTER	1									
3	.	121101-32152	ELEMENT-AIR FILTER	1									
4	.	121104-62053	BRACKET	1									
5	.	121106-02141	GASKET	1									
6	.	121106-02185	GASKET,MUFFLER	1									
7	.	121606-02171	PIPE-INTAKE	1									
8	.	124907-02491	MUFFLER-COMP	1									
9	.	124910-62446	COVER-MUFFLER	1									
10	.	129200-92166	SCREW	3									
11	.	129200-92308	SCREW	2									
12	.	129201-51193	NUT	2									
13	.	129202-62272	SPACER,6.2X7.8X8	2									
14	.	129215-02152	BOLT	2									
15	.	129220-02032	WASHER,7X21X2.3	2									
16	.	12156R-06800	BOLT-WP	2									
17	.	121726-06800	BOLT-STUD	2									
18	.	122148-05100	SCREW-PAN+-	2									
19	.	22137-050000	WASHER-PLAIN	2									
20	.	126708-30320	O RING	1									

N088370

10. FUEL TANK & FUEL VALVE



N088371

↑-----↑
 | 1812 |
 | (1802) |
 ↑-----↑
 NPC-3022

10. FUEL TANK & FUEL VALVE

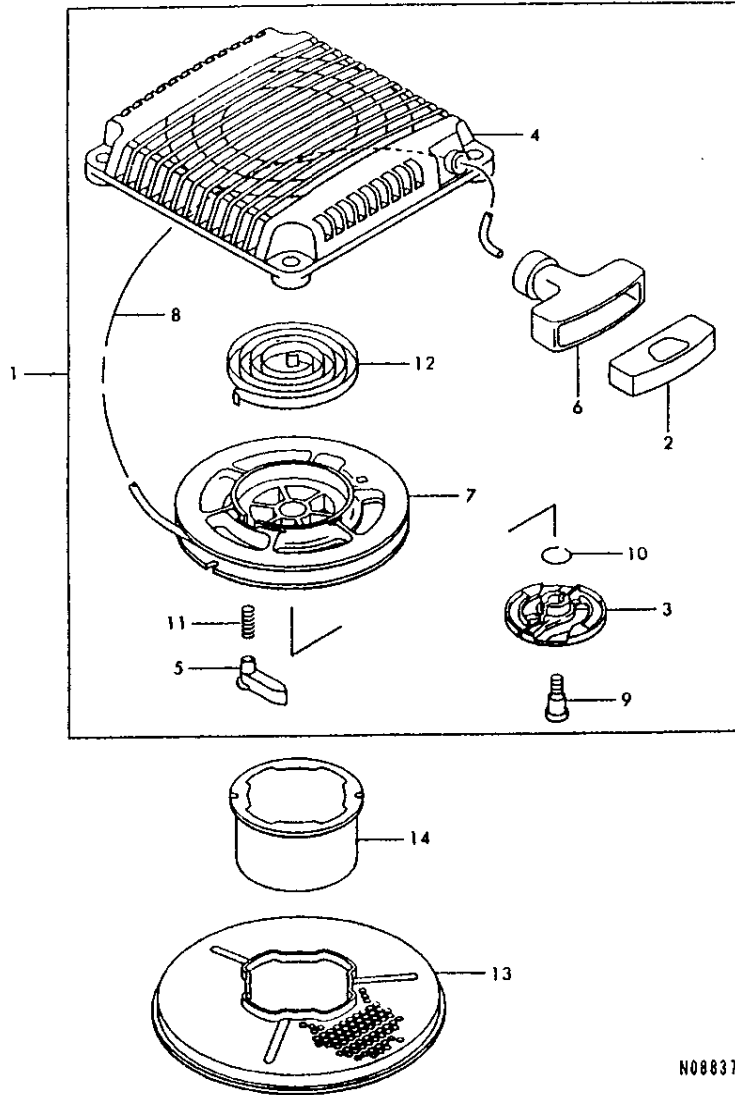
93.02.18

(A)=FC180V (D)=
 (B)= (E)=
 (C)= (F)=

REF. NO.	LEV. 0	PART NO.	DESCRIPTION	Q'TY						I	P/U	A	R
				(A)	(B)	(C)	(D)	(E)	(F)				
1	.	125104-82072	CAP-ASSY-TANK	1									
2	..	121106-02145	GASKET	1									
3	..	121318-32505	PLATE	1									
4	..	124910-92054	ELEMENT-BREATHER	1									
5	.	125102-32160	TAP-ASSY	1									
6	.	126677-68120	CLAMP	2									
7	.	129219-02113	TUBE, 5X10X223	1									

N088371

11. STARTER



N088372

-----+
 | 1813 |
 | (1802) |
 +-----+
 NPC-3022

11. STARTER

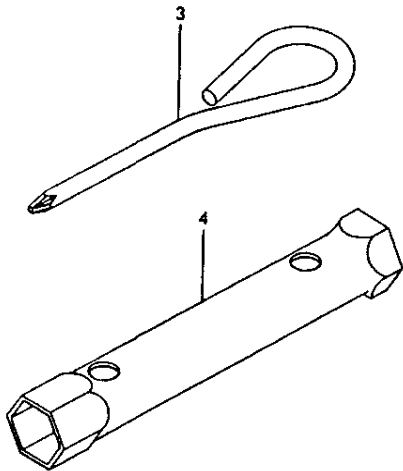
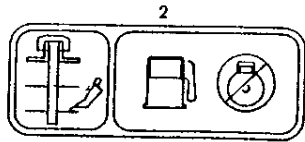
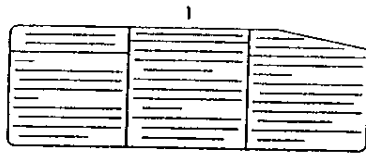
93.02.18

(A)=FC180V (D)=
 (B)= (E)=
 (C)= (F)=

REF. NO.	LEV. 0	PART NO.	DESCRIPTION	-----Q'TY-----						I P/U A R
				(A)	(B)	(C)	(D)	(E)	(F)	
1	.	124908-82423	STARTER-RECOIL	1						
2	..	121101-22255	CAP,GRIP	1						
3	..	121307-02088	GUIDE,PAWL	1						
4	..	121309-12129	HOLDER	1						
5	..	121316-52082	PAWL,RECOIL STARTER	2						
6	..	124607-52082	GRIP,RECOIL STARTER	1						
7	..	125910-12095	REEL,RECOIL STARTER	1						
8	..	125910-62126	ROPE,3.8X1650	1						
9	..	129200-92347	SCREW	1						
10	..	129203-32160	RING-SNAP	1						
11	..	129214-42177	SPRING,RETURN	2						
12	..	129214-42272	SPRING	1						
13	.	121403-72127	SCREEN	1						
14	.	124908-02166	PULLEY-STARTING	1						

N088372

12. LABELS & ACCESSORIES



N088373

↑-----↑
 | 1814 |
 | (1802) |
 ↑-----↑
 NPC-3022

12. LABELS & ACCESSORIES

93.02.18

(A)=FC180V (D)=
 (B)= (E)=
 (C)= (F)=

REF. NO.	LEV. 0	PART NO.	DESCRIPTION	-----Q'TY-----						I	P/U	A	R
				(A)	(B)	(C)	(D)	(E)	(F)				
1	-	125603-12375	LABEL-MANUAL	1									
2	-	125603-12447	LABEL-MANUAL	1									
3	-	129210-72057	DRIVER	1									
4	-	129211-02093	WRENCH, 19X21	1									

N088373

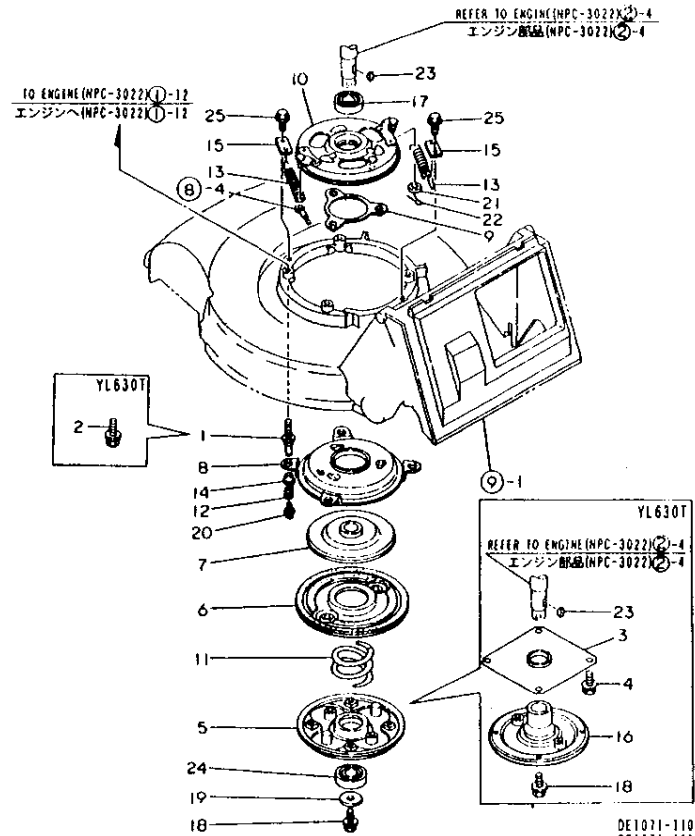
1. ENGINE RELATED & CLUTCH

↑ 1003 ↓
↑ (1002) ↓
↑ MPC-2992 ↓

1. ENGINE RELATED & CLUTCH

93.02.18

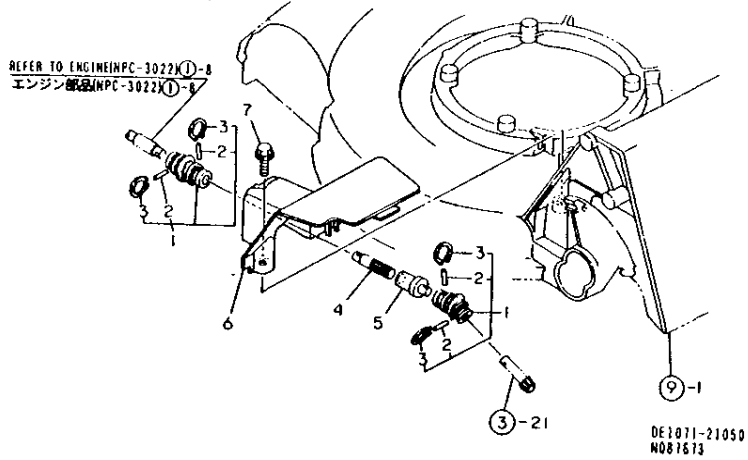
(A)=YL630T (D)=
(B)=YL630TS (E)=
(C)= (F)=



DE1071-11050
DE1071-11100
DE1061-12100
DE1071-12050
N087672

REF. NO.	LEV. 0	PART NO.	DESCRIPTION	Q'TY						I	P	U	A	R
				(A)	(B)	(C)	(D)	(E)	(F)					
1	.	1E1061-11100	BOLT,ENGINE SET		4									1
2	.	26107-100352	BOLT 10X35,COLLAR HD	4										10
3	.	1E1071-12750	COVER,ENGINE LOWER	1										
4	.	26018-080164	BOLT M 8X 16	4										20
5	.	1E1060-12011	PLATE,MAIN		1									1
6	.	1E1060-12100	DISK		1									1
7	.	1E1061-12150	DRUM,DRIVE		1									1
8	.	1E1061-12170	PLATE,DISC		1									1
9	.	1E1061-12220	BRACKET,BOWL		1									1
10	.	1E1061-12251	BRACKET,DISK BOWL		1									1
11	.	1E1071-12300	SPRING,CLUTCH		1									
12	.	1E1061-12310	SPRING, GUIDE		4									1
13	.	1E1071-12320	SPRING,CLUTCH RETURN		2									
14	.	1E1060-12340	METAL 106,FLANGED		4									1
15	.	1E1061-12360	HOOK,RETURN SPRING		2									1
16	.	1E1061-12650	FRANGE,BLADE		1									1
17	.	1E1060-12970	BEARING 60/22UU		1									1
18	.	1E1060-12990	BOLT 10X28,COLLAR HD	1	1									1
19	.	1A1040-46460	WASHER 10X33X4.5		1									5
20	.	1E4480-99150	BOLT 6X12		4									1
21	.	22137-060000	WASHER 6,POLISHED		1									10
22	.	22417-200120	COTTER PIN 2.0X12		1									10
23	.	22522-040160	WOODRUFF KEY 4X16	1	1									1
24	.	24104-062044	BALL BEARING		1									1
25	.	26476-080162	BOLT M 8X 16,TAPPING		2									10

2. INPUT



↑-----↑
1 (C05) 1
1 (C04) 1
↑-----↑
NPC-2992

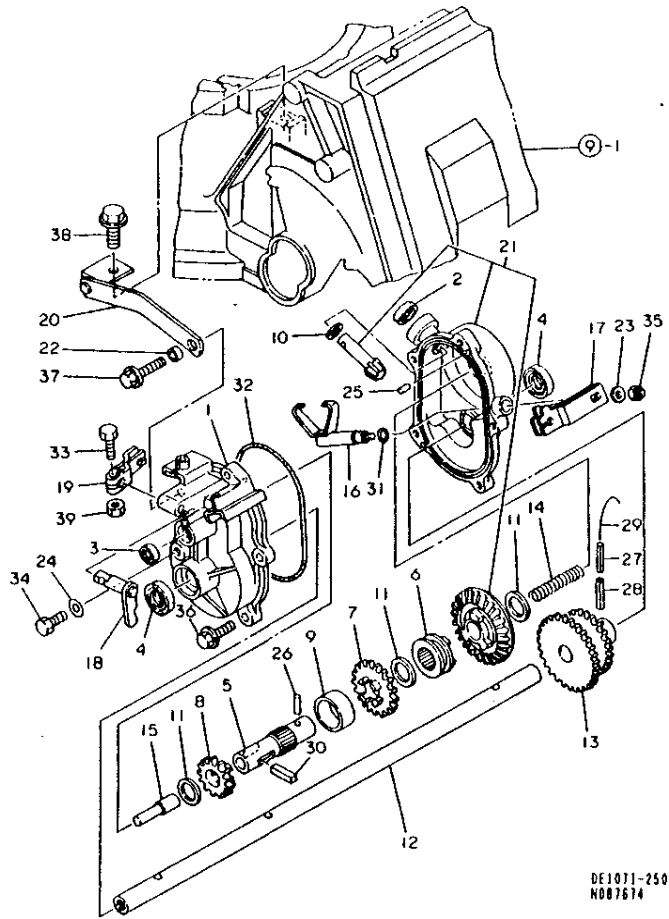
2. INPUT

93.02.18

(A)=YL630T (D)=
(B)=YL630TS (E)=
(C)= (F)=

REF. NO.	LEV. 0	PART NO.	DESCRIPTION	-----QTY-----						I P/U A R
				(A)	(B)	(C)	(D)	(E)	(F)	
1	.	1E1061-21010	JOINT COMP.,TYPE 10	2	2					1
2	..	1E1061-21030	PIN, FLEXIBLE JOINT	4	4					1
3	..	22242-000200	CIRCLIP 20	4	4					10
4	.	1E1071-21100	SHAFT A 53,SLIDE	1	1					1
5	.	1E1071-21120	SHAFT B 53,SLIDE	1	1					1
6	.	1E1071-21250	COVER 63,P.T.O.	1	1					
7	.	26476-080162	BOLT M 8X 16,TAPPING	1	1					10

3. GEAR CASE



↑-----↑
 1 1C06 1
 1 (1C04) 1
 ↑-----↑
 NPC-2992

3. GEAR CASE

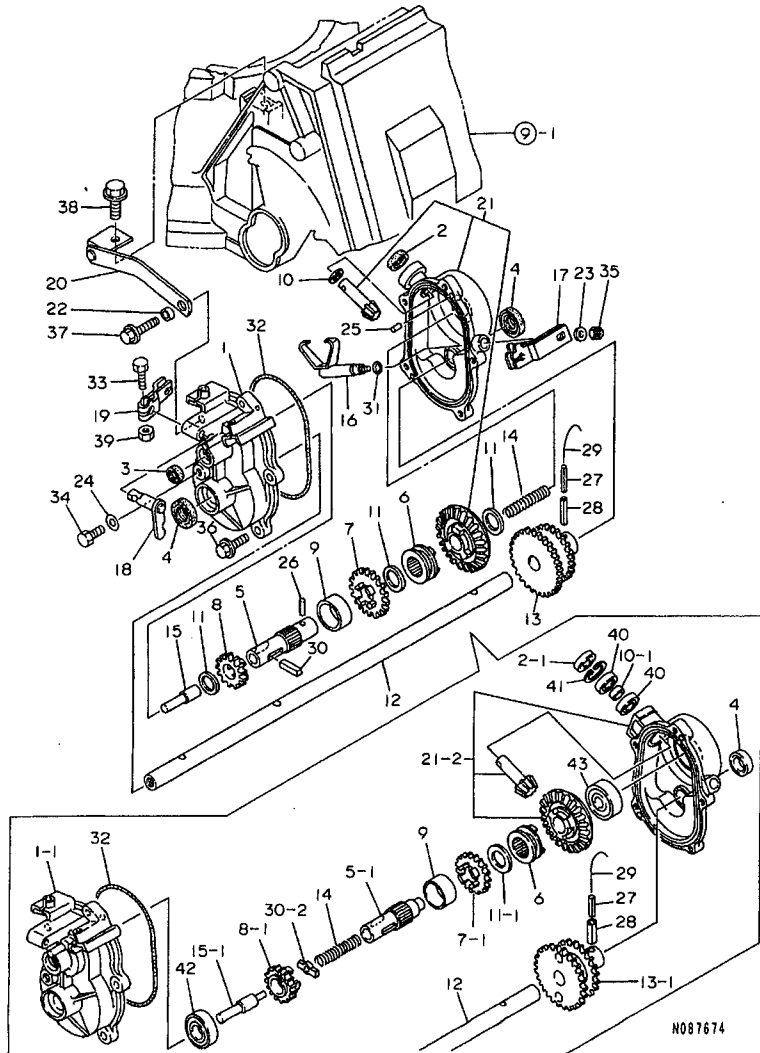
93.02.18

(A)=YL630T (D)=
 (B)=YL630TS (E)=
 (C)= (F)=

REF. NO.	LEV. 0	PART NO.	DESCRIPTION	-----Q'TY-----					
				(A)	(B)	(C)	(D)	(E)	(F)
1	.	1E1061-25011	CASE, GEAR	1	1				
2	.	1E1061-25050	SEAL TC10205,OIL	1	1				1
3	.	1E1061-25060	SEAL TC8165,OIL	1	1				1
4	.	1E1061-25070	SEAL TC15255,OIL	2	2				1
5	.	1E1061-25110	SHAFT,CLUTCH	1	1				1
6	.	1E1060-25140	CLUTCH,AXLE	1	1				1
7	.	1E1061-25140	GEAR 31	1	1				1
8	.	1E1061-25150	GEAR 21	1	1				1
9	.	1E1061-25160	COLLAR 26X32X14	1	1				1
10	.	1E1061-25170	LINER 10X16X1	1	1				1
11	.	1E1061-25180	LINER 17301	3	3				1
12	.	1E1071-25200	SHAFT 53,DRIVE	1	1				1
13	.	1E1061-25210	GEAR 45-36 COMPL.	1	1				1
14	.	1E1061-25250	SPRING 10.7X53	1	1				1
15	.	1E1061-25270	PIN,CHANGE	1	1				1
16	.	1E1061-25300	CLUTCH FORK	1	1				1
17	.	1E1061-25330	LEVER 45H,TIP	1	1				1
18	.	1E1061-25370	LINK,CHANGE	1	1				1
19	.	1E1061-25410	LEVER 30,TIP	1	1				1
20	.	1E1061-25430	LINK,CASE SUPPORT	1	1				1
21	.	1E1061-25500	BEVEL CASE CMP.	1	1				1
22	.	1E6910-39640	COLLAR 6.5X10.5X5	1	1				1
23	.	22137-060000	WASHER 6,POLISHED	1	1				10
24	.	22190-080000	SEAL WASHER 8	1	1				10
25	.	22312-040080	PIN 4X8,STRAIGHT	2	2				10
26	.	22312-040140	PARALLEL PIN 4X14	1	1				10
27	.	22351-035025	SPRING PIN 3.5X25	1	1				10
28	.	22351-060025	SPRING PIN 6X25	1	1				10
29	.	22451-100160	WIRE 1.0X160,BINDING	1	1				10
30	.	22551-050250	KEY 5X25	1	1				1
31	.	24311-000070	O-RING 1A P-7.0	1	1				10
32	.	24321-001100	O-RING 1A G-110.0	1	1				10
33	.	26117-060202	BOLT M 6X 20 PLATED	1	1				10
34	.	26117-080122	BOLT M 8X 12 PLATED	1	1				10
35	.	26347-060002	U-NUT M6	1	1				10
36	.	26476-060202	BOLT M 6X 20,TAPPING	4	4				10
37	.	26476-060302	BOLT M 6X 30,TAPPING	1	1				10
38	.	26476-080162	BOLT M 8X 16,TAPPING	1	1				10
39	.	26717-060002	NUT M 6	1	1				10

Fig.3. GEAR CASE

3. GEAR CASE



Remarks

- (1) REF. NO.30 PART IS PLATED
REF. NO.30-1 PART IS NOT PLATED
- (2) REF. NO.1-1 PART HAS REF.NO.42
BEARING MOUNTING HOLE
- (3) TOOTH NUMBER=REF.NO.7,31
TOOTH;REF.NO.7-1,27 TOOTH

NPC-2992 3. GEAR CASE

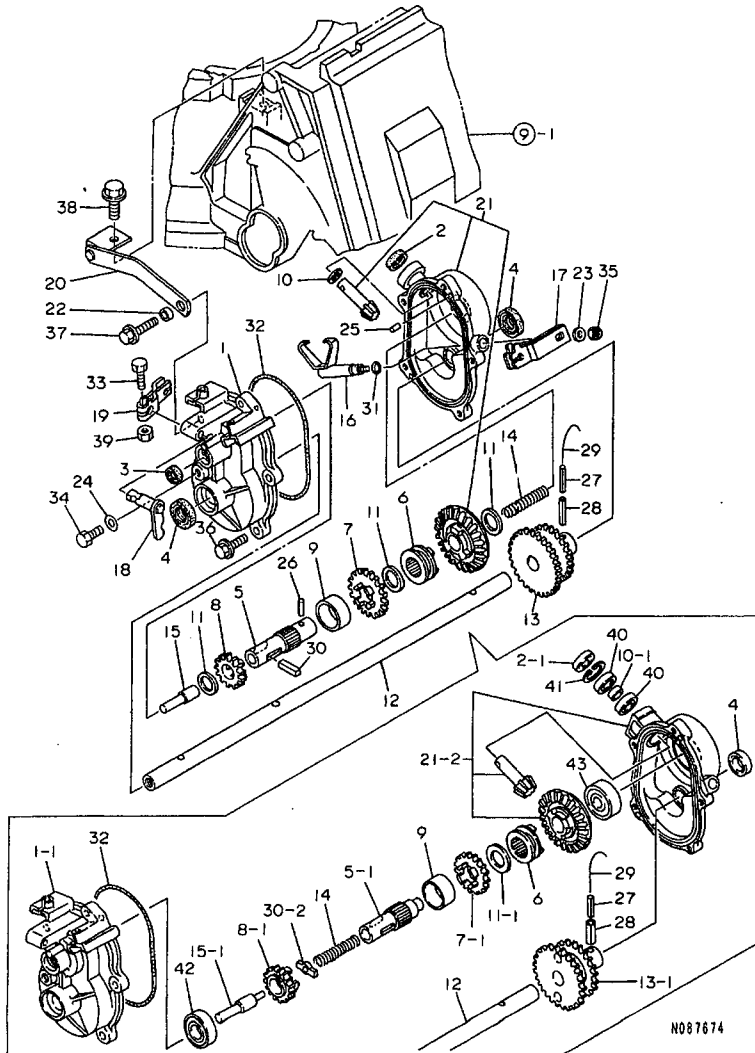
(A)=YL630T (D)=
(B)=YL630TS (E)=
(C)=YL630T-R (F)=

REF.	LEV.	PARTS NO.	DESCRIPTION	QTY						I	R
				(A)	(B)	(C)	(D)	(E)	(F)		
1	1	1E1061-25011	CASE, GEAR	1	1	1					
I 1-1	1	1E1061-25012 (B=F100968)	CASE, GEAR (C=F100191)		1	1					S 2
2	1	1E1061-25050	SEAL TC10205,OIL	1	1	1					
I 2-1	1	1E1061-25051 (B=F100968)	OIL SEAL TC10225 (C=F100191)		1	1					S
3	1	1E1061-25060	SEAL TC8165,OIL	1	1	1					
4	1	1E1061-25070	SEAL TC15255,OIL	2	2	2					
5	1	1E1061-25110	SHAFT,CLUTCH	1	1	1					
I 5-1	1	1E1061-25111 (B=F100968)	SHAFT,CLUTCH (C=F100191)		1	1					S
6	1	1E1060-25140	CLUTCH,AXLE	1	1	1					
7	1	1E1061-25140	GEAR 31	1	1	1					
I 7-1	1	1E1061-25141 (B=F100968)	GEAR 27 (C=F100191)		1	1					S 3
I 7-2	1	1E1061-25142 (B=F101323)	GEAR 27		1						N
8	1	1E1061-25150	GEAR 21	1	1	1					
I 8-1	1	1E1061-25151 (B=F100968)	GEAR 21 (C=F100191)		1	1					S
9	1	1E1061-25160	COLLAR 26X32X14	1	1	1					
10	1	1E1061-25170	LINER 10X16X1	1	1	1					
I 10-1	1	1E1061-25171 (B=F100968)	SPACER 10X13.8X6 (C=F100191)		1	1					S
11	1	1E1061-25180	LINER 17301	3	3	3					
I 11-1	1	1E1061-25180 (B=F100968)	LINER 17301 (C=F100191)		1	1					K
12	1	1E1071-25200	SHAFT 53,DRIVE	1	1	1					
13	1	1E1061-25210	GEAR 45-36 COMPL.	1	1	1					
I 13-1	1	1E1061-25211 (B=F100968)	GEAR 45-39 (C=F100191)		1	1					S
I 13-2	1	1E1061-25212 (B=F101323)	GEAR 45-39		1						N
14	1	1E1061-25250	SPRING 10.7X53	1	1	1					
15	1	1E1061-25270	PIN,CHANGE	1	1	1					
I 15-1	1	1E1061-25271 (B=F100968)	PIN,CHANGE (C=F100191)		1	1					S
16	1	1E1061-25300	CLUTCH FORK	1	1	1					
17	1	1E1061-25330	LEVER 45H,TIP	1	1	1					
18	1	1E1061-25370	LINK,CHANGE	1	1	1					
19	1	1E1061-25410	LEVER 30,TIP	1	1	1					
20	1	1E1061-25430	LINK,CASE SUPPORT	1	1	1					
21	1	1E1061-25500	BEVEL CASE CMP.	1	1	1					
I 21-1	1	1E1061-25501 (B=F100328)	BEVEL CASE CMP. (C=F100021)		1	1					N
I 21-2	1	1E1061-25502 (B=F100968)	CASE,BEVEL GEAR,ASY (C=F100191)		1	1					S
22	1	1E6910-39640	COLLAR 6.5X10.5X5	1	1	1					
23	1	22137-060000	WASHER 6, POLISHED	1	1	1					
24	1	22190-080000	SEAL WASHER 8(BOLT)	1	1	1					
25	1	22312-040080	PIN 4X8,STRAIGHT	2	2	2					
I 26	1	22312-040140 (B=F100968)	PARALLEL PIN 4X14 (C=F100191)		1	1					Z
27	1	22351-035025	SPRING PIN 3.5X25	1	1	1					

++ CONTINUE ++

Fig.3. GEAR CASE

3. GEAR CASE



Remarks

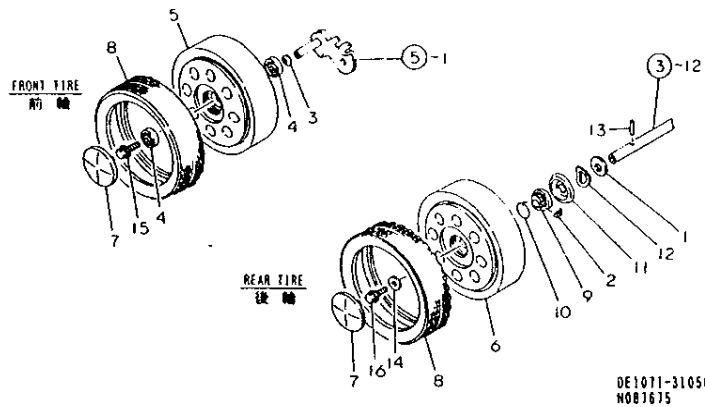
- (1) REF. NO.30 PART IS PLATED
REF. NO.30-1 PART IS NOT PLATED
- (2) REF. NO.1-1 PART HAS REF.NO.42
BEARING MOUNTING HOLE
- (3) TOOTH NUMBER=REF.NO.7,31
TOOTH;REF.NO.7-1,27 TOOTH

NPC-2992 3. GEAR CASE

(A)=YL630T (D)=
(B)=YL630TS (E)=
(C)=YL630T-R (F)=

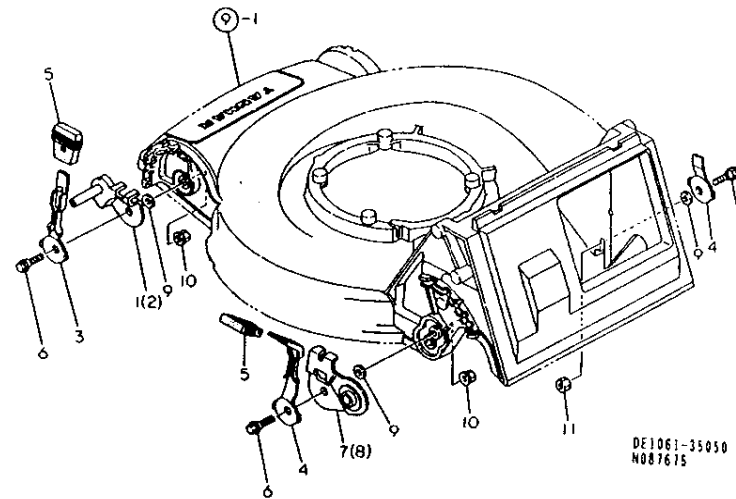
REF.	LEV.	PARTS NO.	DESCRIPTION	Q'TY						I	R
				(A)	(B)	(C)	(D)	(E)	(F)		
28	1	22351-060025	SPRING PIN 6X25	1	1	1					
29	1	22451-100160	WIRE 1.0X160,BINDING	1	1	1					
30	1	22551-050250	KEY 5X25	1	1						
30-1	1	1E1061-25490	KEY 5X5X25	1	1	1				S	1
		(A=F100291)	(B=F100251)								
I 30-2	1	1E1061-25491	TINE CLUTCH		1	1					S
		(B=F100968)	(C=F100191)								
31	1	24311-000070	O-RING 1A P-7.0	1	1	1					
32	1	24321-001100	O-RING 1A G-110.0	1	1	1					
33	1	26117-060202	BOLT M 6X 20	1	1	1					
34	1	26117-080122	BOLT M 8X 12 PLATED	1	1	1					
35	1	26347-060002	U-NUT M 6	1	1	1					
36	1	26476-060202	BOLT M 6X 20,TAPPING	4	4	4					
37	1	26476-060302	BOLT M 6X 30,TAPPING	1	1	1					
38	1	26476-080162	BOLT M 8X 16,TAPPING	1	1	1					
39	1	26717-060002	NUT M 6	1	1	1					
I 40	1	1E1061-25481	BEARING 6900		2	2					W
		(B=F100968)	(C=F100191)								
I 41	1	22252-000220	CIRCLIP 22		1	1					W
		(B=F100968)	(C=F100191)								
I 42	1	24101-060034	BALL BEARING		1	1					W
		(B=F100968)	(C=F100191)								
I 43	1	24101-063014	BALL BEARING		1	1					W
		(B=F100968)	(C=F100191)								

4. WHEELS



DE1071-31050
N087675

5. AXLE



DE1061-35050
N087675

-----+
| 1C08 |
| (1C07) |
+-----+
NPC-2992

4. WHEELS

93.02.18

(A)=YL630T (D)=
(B)=YL630TS (E)=
(C)= (F)=

REF. NO.	LEV. O	PART NO.	DESCRIPTION	-----Q'TY-----						I	P	U	A	R
				(A)	(B)	(C)	(D)	(E)	(F)					
1	.	1E4110-24010	LINER 15	2	2								2	
2	.	1E1060-25420	PAWL, CLUTCH	4	4								1	
3	.	1E1060-31100	SPRING 12.7X23, LOCK	2	2								1	
4	.	1E1060-31450	SHAFT HOLDER	4	4								1	
5	.	1E1071-31500	WHEEL, FRONT	2	2									
6	.	1E1071-31510	WHEEL, REAR	2	2									
7	.	1E1061-31530	CAP, WHEEL	4	4								1	
8	.	1E1061-31550	TIRE	4	4								1	
9	.	1E1061-31650	CLUTCH	2	2								1	
10	.	1E1061-31671	SPRING 26, RING	2	2								1	
11	.	1E1061-31681	COVER, CLUTCH	2	2								1	
12	.	1E1061-31690	PLATE, COVER KEEP	2	2								1	
13	.	1E1061-31750	PIN 5X25, STRAIGHT	2	2								1	
14	.	22157-080000	WASHER 8	2	2								10	
15	.	26018-080164	BOLT M 8X 16	2	2								20	
16	.	26107-080122	BOLT M 8X 12 PLATED	2	2								5	

N087675

-----+
| 1C09 |
| (1C07) |
+-----+
NPC-2992

5. AXLE

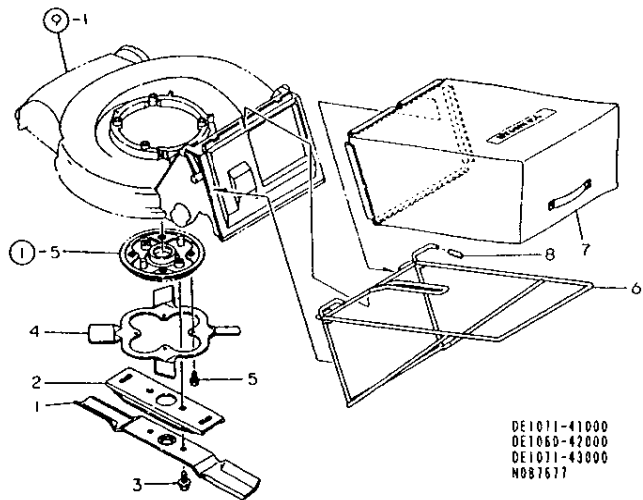
93.02.18

(A)=YL630T (D)=
(B)=YL630TS (E)=
(C)= (F)=

REF. NO.	LEV. O	PART NO.	DESCRIPTION	-----Q'TY-----						I	P	U	A	R
				(A)	(B)	(C)	(D)	(E)	(F)					
1	.	1E1061-35010	AXLE L, FRONT	1	1									1
2	.	1E1061-35050	AXLE R, FRONT	1	1									1
3	.	1E1061-35200	LEVER, FRONT WHEEL	2	2									1
4	.	1E1061-35210	LEVER, REAR WHEEL	2	2									1
5	.	1E1061-35250	GRIP, ADJUSTING	4	4									1
6	.	1E1061-35350	BOLT 8X25, STEPPED	4	4									1
7	.	1E1061-35510	AXLE L, REAR	1	1									1
8	.	1E1061-35550	AXLE R, REAR	1	1									1
9	.	22137-080000	WASHER 8, POLISHED	4	4									10
10	.	26367-080002	U-NUT M 8	3	3									10
11	.	26717-080002	NUT M 8	1	1									10

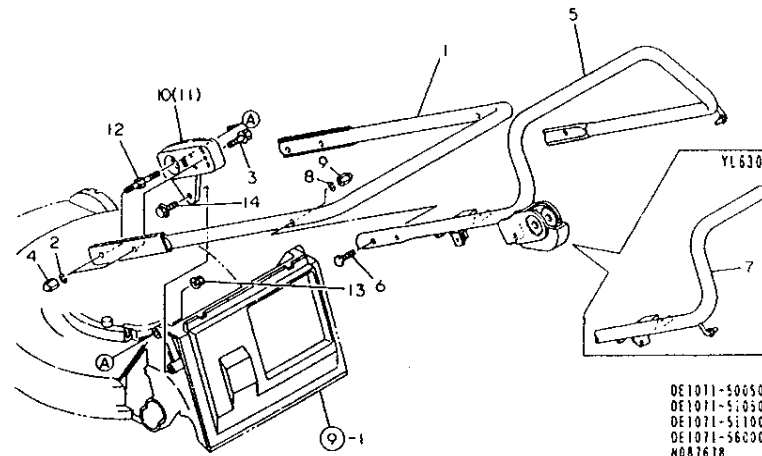
N087676

6. BLADE, FAN & CATCHER



DE1071-41000
DE1060-42000
DE1071-43000
N087677

7. HANDLE



DE1071-50050
DE1071-51050
DE1071-51100
DE1071-56000
N087678

-----+
| 1C11 |
| (1C10) |
-----+
NPC-2992

6. BLADE, FAN & CATCHER

93.02.18

(A)=YL630T (D)=
(B)=YL630TS (E)=
(C)= (F)=

REF. NO.	LEV. 0	PART NO.	DESCRIPTION	Q'TY						I	P	U	A	R
				(A)	(B)	(C)	(D)	(E)	(F)					
1	.	1E1071-41100	BLADE 53	1	1									1
2	.	1E1060-41120	GUIDE, BLEDE	1	1									1
3	.	26138-100202	BOLT 10X20, COLLAR HD	2	2									10
4	.	1E1060-42050	FAN, BLADE	1	1									1
5	.	26016-060122	BOLT M 6X 12	4	4									10
6	.	1E1071-43011	FRAME 53, CATCHER	1	1									1
7	.	1E1071-43100	CATCHER 53	1	1									1
8	.	1E1061-43200	PIPE 8 10 35	2	2									

N087677

-----+
| 1C13 |
| (1C12) |
-----+
NPC-2992

7. HANDLE

93.02.18

(A)=YL630T (D)=
(B)=YL630TS (E)=
(C)= (F)=

REF. NO.	LEV. 0	PART NO.	DESCRIPTION	Q'TY						I	P	U	A	R
				(A)	(B)	(C)	(D)	(E)	(F)					
1	.	1E1071-50010	HANDLE COMP., MAIN	1	1									
2	.	22217-080000	SPRING WASHER 8	4	4									10
3	.	26107-080302	BOLT M 8X 30 PLATED	2	2									5
4	.	26668-080002	CAP NUT M 8	4	4									10
5	.	1E1061-51011	HANDLE TS COMPL.	1	1									1
6	.	1E1061-51110	BOLT 8X40, FLAT HEAD	2	2									1
7	.	1E1061-51700	HANDLE TD COMPL.	1	1									1
8	.	22217-080000	SPRING WASHER 8	2	2									10
9	.	26668-080002	CAP NUT M 8	2	2									10
10	.	1E1061-56010	STAY (L), HANDLE	1	1									1
11	.	1E1061-56050	STAY (R), HANDLE	1	1									1
12	.	1E1071-56200	BOLT M8X36, STAY	2	2									
13	.	26367-080002	U-NUT M 8	2	2									10
14	.	26476-080162	BOLT M 8X 16, TAPPING	2	2									10

N087678

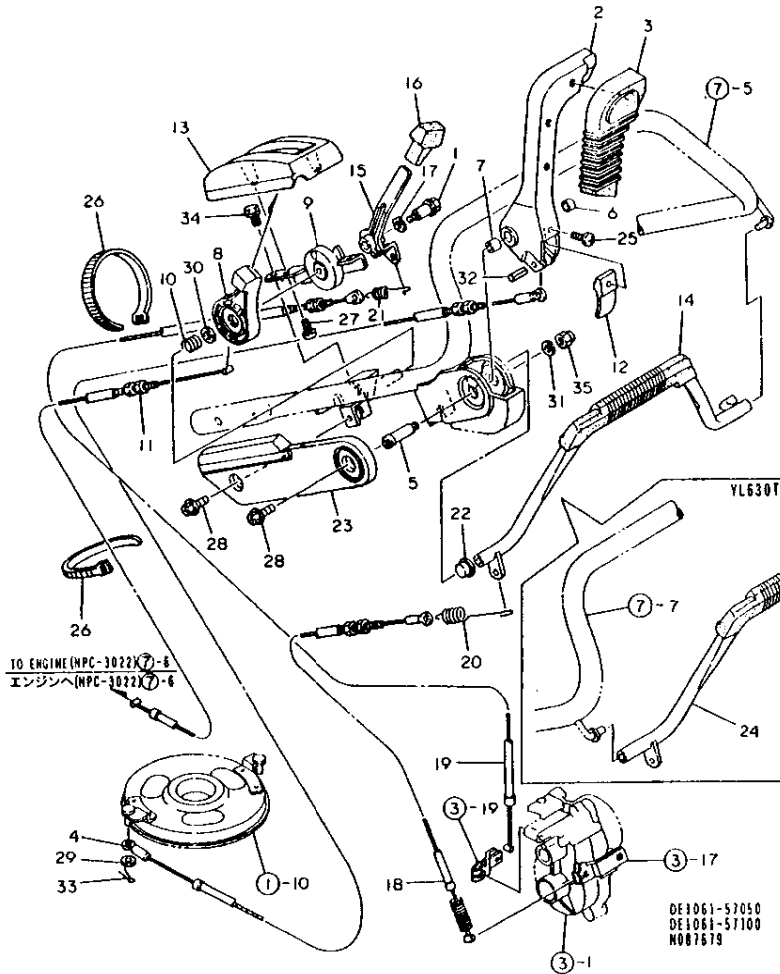
8. LEVER WIRE

8. LEVER WIRE

93.02.18

↑-----↑
↑ 1C14 ↑
↑ (1C12) ↑
↑-----↑
NPC-2992

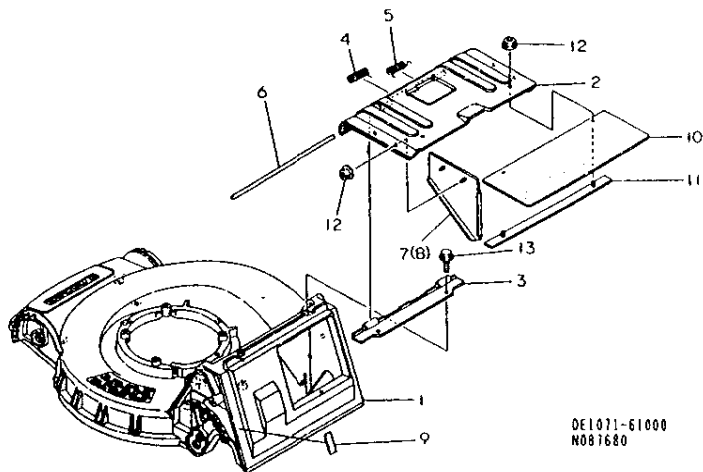
(A)=YL630T (D)=
(B)=YL630TS (E)=
(C)= (F)=



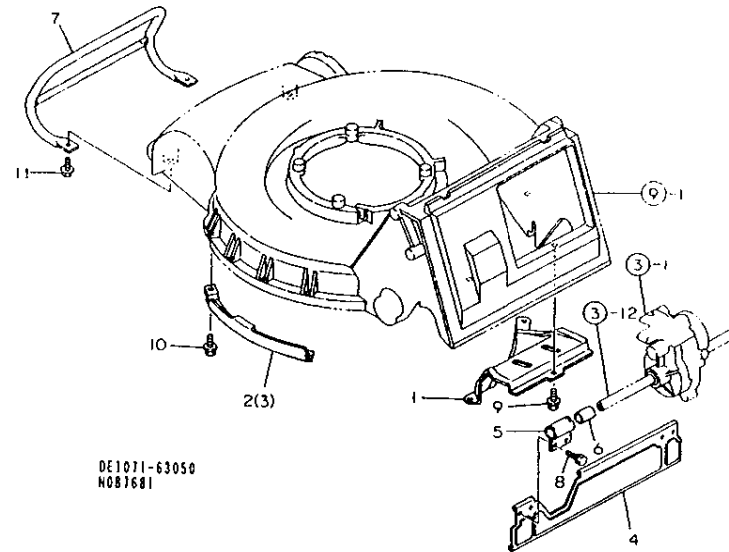
REF. NO.	LEV. 0	PART NO.	DESCRIPTION	Q'TY						I	P/U	A	R
				(A)	(B)	(C)	(D)	(E)	(F)				
1	.	1E1060-12350	BOLT 6X12, STEPPED	1	1							1	
2	.	1E1061-57011	LEVER, BLADE CLUTCH				1						
3	.	1E1061-57040	GRIP, BLADE CLUTCH				1					1	
4	.	1E1061-57050	WIRE, BLADE CLUTCH				1					1	
5	.	1E1061-57061	PIN, LEVER FULCRUM				1						
6	.	1E1061-57080	METAL 12X12				1						
7	.	1E1061-57090	METAL 12X15				1						
8	.	1E1061-57110	LEVER ASSY, ACCEL.	1	1							1	
9	.	1E1061-57130	COVER, ACCELERATOR	1	1							1	
10	.	1E1061-57141	COIL SPRING 13	1	1							1	
11	.	1E1061-57150	WIRE, ACCELERATOR	1	1							1	
12	.	1E1060-57200	PLATE, LEVER CONTACT				1					1	
13	.	1E1061-57300	COVER, LATCH	1	1							1	
14	.	1E1061-57501	T. CLUTCH LEVER CMP.				1						
15	.	1E1061-57560	LEVER, CHANGE	1	1							1	
16	.	1E1061-57600	GRIP, CHANGE LEVER	1	1							1	
17	.	1E1061-57640	WASHER 10, PLAIN	1	1							1	
18	.	1E1061-57650	WIRE, TRAVEL CLUTCH	1	1							1	
19	.	1E1061-57700	WIRE, CHANGE	1	1							1	
20	.	1E1061-57730	SPRING 112, TENSION	1	1							1	
21	.	1E1061-57740	SPRING 66, VENSION	1	1							1	
22	.	1E1061-57750	METAL, TRV. CLTCH. LVR.				1					1	
23	.	1E1061-57850	COVER, HANDLE SIDE				1					1	
24	.	1E1061-57921	T. CLUTCH LEVER CMP.	1									
25	.	160010-82850	SCREW 4X12, TAPPING				1					10	
26	.	1E6102-84970	BAND 140, WIRE LOCK	2	2							1	
27	.	1E6790-95471	SCREW 6X16, TAPPING	2	2							30	
28	.	1E4320-99120	BOLT 6X16, CRHM.				2					5	
29	.	22137-060000	WASHER 6, POLISHED				1					10	
30	.	22137-100000	WASHER 10, POLISHED	1	1							10	
31	.	22217-080000	SPRING WASHER 8				1					10	
32	.	22351-050025	SPRING PIN 5X25				1					10	
33	.	22417-200120	COTTER PIN 2.0X12				1					10	
34	.	26016-060124	BOLT 6X12 W/L.W.	1	1							30	
35	.	26658-080002	CAP NUT M 8				1					5	

9. CASING & COVERS

10. SCRAPER & GUIDE



DE1071-61000
N087680



DE1071-63050
N087681

-----+
| 1C16 |
| (1C15) |
+-----+
NPC-2992

9. CASING & COVERS

93.02.18

(A)=YL630T (D)=
(B)=YL630TS (E)=
(C)= (F)=

REF. NO.	LEV. 0	PART NO.	DESCRIPTION	-----Q'TY-----						I	P	U	A	R
				(A)	(B)	(C)	(D)	(E)	(F)					
1	.	1E1071-61010	CASING 53, BLADE	1	1									1
2	.	1E1071-61050	COVER 53, CATCHER	1	1									1
3	.	1E1061-61070	SEAT, COVER MOUNTING	1	1									1
4	.	1E1061-61110	SPRING A, COVER RETRN	1	1									1
5	.	1E1061-61120	SPRING B, COVER RETRN	1	1									1
6	.	1E1061-61130	PIN 8X310	1	1									1
7	.	1E1061-61201	CATCHER COVER STAY L	1	1									1
8	.	1E1061-61251	CATCHER COVER STAY R	1	1									1
9	.	1E1061-61300	PROTECTION RUBBER A	2	2									2
10	.	1E1071-61310	RUBBER 530, SCTTR. CHK	1	1									1
11	.	1E1061-61320	WASHER, RETAINER	1	1									1
12	.	26367-D60002	NUT M 6	6	6									30
13	.	26476-080162	BOLT M 8X 16, TAPPING	2	2									10

N087680

-----+
| 1D01 |
| (1C15) |
+-----+
NPC-2992

10. SCRAPER & GUIDE

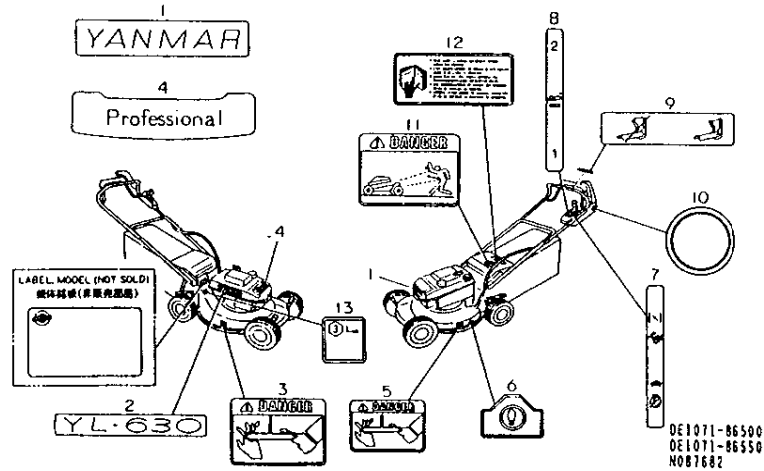
93.02.18

(A)=YL630T (D)=
(B)=YL630TS (E)=
(C)= (F)=

REF. NO.	LEV. 0	PART NO.	DESCRIPTION	-----Q'TY-----						I	P	U	A	R
				(A)	(B)	(C)	(D)	(E)	(F)					
1	.	1E1071-63010	GUIDE 53, GLASS	1	1									1
2	.	1E1071-63051	GUIDE 53L, GLASS FRNT	1	1									1
3	.	1E1071-63060	GUIDE 53R, GLASS FRNT	1	1									1
4	.	1E1071-63100	GUARD 53, STONE	1	1									1
5	.	1E1061-63130	HANGER, STONE GUARD	2	2									1
6	.	1E1061-63140	BUSH 16X18X25	2	2									1
7	.	1E1071-65090	GUARD, FRONT	1	1									1
8	.	26016-D60124	BOLT 6X12 W/L.W.	4	4									30
9	.	26476-080162	BOLT M 8X 16, TAPPING	3	3									10
10	.	26476-080162	BOLT M 8X 16, TAPPING	4	4									10
11	.	26476-080162	BOLT M 8X 16, TAPPING	2	2									10

N087681

11. LABELS



DE1071-86500
DE1071-86550
N087682

↑-----↑
↑ 1003 ↑
↑ (1002) ↑
↑-----↑
NPC-2992

11. LABELS

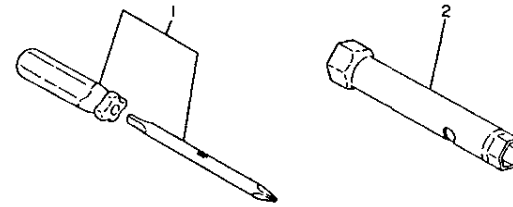
93.02.18

(A)=YL630T (D)=
(B)=YL630TS (E)=
(C)= (F)=

REF. NO.	LEV. 0	PART NO.	DESCRIPTION	-----Q'TY-----						I	P	U	A	R
				(A)	(B)	(C)	(D)	(E)	(F)					
1	.	1E1071-86010	MARK, FRONT	1	1									
2	.	1E1071-86070	MARK "630", MODEL	1	1									
3	.	1E1061-86100	LABEL A, HOUSING	1	1							1		
4	.	1E1071-86100	MARK "PRO"	1	1									
5	.	1E1061-86110	LABEL B, HOUSING	1	1							1		
6	.	1E1061-86121	LABEL, STEP	1	1							1		
7	.	1E1061-86150	LABEL, CONTROL	1	1							1		
8	.	1E1061-86160	INDICATING PLATE	1	1							1		
9	.	1E1061-86171	LABEL, BLADE LEVER			1						1		
10	.	1E1061-86180	MARK, SIDE COVER			1						1		
11	.	1E1061-86200	LABEL, CATCHER COVER	1	1							1		
12	.	1E1061-86220	LABEL, HANDL'G CAUT'N	1	1							1		
13	.	1E1070-86910	MARK 100, EC PASSING	1	1							1		

N087682

12. TOOLS



DE1060-87000
N081683

↑-----↑
↑ 1004 ↑
↑ (1002) ↑
↑-----↑
NPC-2992

12. TOOLS

93.02.18

(A)=YL630T (D)=
(B)=YL630TS (E)=
(C)= (F)=

REF. NO.	LEV. 0	PART NO.	DESCRIPTION	-----Q'TY-----						I	P	U	A	R
				(A)	(B)	(C)	(D)	(E)	(F)					
1	.	1C6052-88060	SCREWDRIVER, COMBINAT	1	1									1
2	.	1E4150-99260	BOX WRENCH 13X21	1	1									1

N087683

PART NO.	GRP. NO.	REF. NO.	LOC. NO.	PART NO.	GRP. NO.	REF. NO.	LOC. NO.	PART NO.	GRP. NO.	REF. NO.	LOC. NO.	PART NO.	GRP. NO.	REF. NO.	LOC. NO.
1A1040-46460	1	19	1C03	1E1061-35210	5	4	1C09	1E1071-12320	1	13	1C03	121200-52089	3	2	1B05
1C6052-88060	12	1	1D04	1E1061-35250	5	5	1C09	1E1071-12750	1	3	1C03	121200-92062	3	3	1B05
1E1060-12011	1	5	1C03	1E1061-35350	5	6	1C09	1E1071-21100	2	4	1C05	121201-62057	3	4	1B05
1E1060-12100	1	6	1C03	1E1061-35510	5	7	1C09	1E1071-21120	2	5	1C05	121203-22065	3	5	1B05
1E1060-12340	1	14	1C03	1E1061-35550	5	8	1C09	1E1071-21250	2	6	1C05	121308-06300	7	17	1B09
1E1060-12350	8	1	1C14	1E1061-43200	6	8	1C11	1E1071-25200	3	12	1C06	121306-06250	6	14	1B08
1E1060-12970	1	17	1C03	1E1061-51011	7	5	1C13	1E1071-31500	4	5	1C08	121306-08350	1	24	1B03
1E1060-12990	1	18	1C03	1E1061-51110	7	6	1C13	1E1071-31510	4	6	1C08	121306-08450	1	25	1B03
1E1060-25140	3	6	1C06	1E1061-51700	7	7	1C13	1E1071-41100	6	1	1C11	121300-12134	2	1	1B04
1E1060-25420	4	2	1C08	1E1061-56010	7	10	1C13	1E1071-43011	6	6	1C11	121300-21004	2	2	1B04
1E1060-31100	4	3	1C08	1E1061-56050	7	11	1C13	1E1071-43100	6	7	1C11	121300-86029	2	3	1B04
1E1060-31450	4	4	1C08	1E1061-57011	8	2	1C14	1E1071-50010	7	1	1C13	121303-12078	2	4	1B04
1E1060-41120	6	2	1C11	1E1061-57040	8	3	1C14	1E1071-56200	7	12	1C13	121304-22088	3	10	1B05
1E1060-42050	6	4	1C11	1E1061-57050	8	4	1C14	1E1071-61010	9	1	1C16	121307-02088	11	3	1B13
1E1060-57200	8	12	1C14	1E1061-57061	8	5	1C14	1E1071-61050	9	2	1C16	121307-02091	3	6	1B05
1E1061-11100	1	1	1C03	1E1061-57080	8	6	1C14	1E1071-61310	9	10	1C16	121307-02092	4	2	1B06
1E1061-12150	1	7	1C03	1E1061-57090	8	7	1C14	1E1071-63010	10	1	1D01	121309-12129	11	4	1B13
1E1061-12170	1	8	1C03	1E1061-57110	8	8	1C14	1E1071-63051	10	2	1D01	121310-72255	1	7	1B03
1E1061-12220	1	9	1C03	1E1061-57130	8	9	1C14	1E1071-63060	10	3	1D01	121310-72256	1	8	1B03
1E1061-12251	1	10	1C03	1E1061-57141	8	10	1C14	1E1071-63100	10	4	1D01	121311-62065	3	7	1B05
1E1061-12310	1	12	1C03	1E1061-57150	8	11	1C14	1E1071-65090	10	7	1D01	121316-52082	11	5	1B13
1E1061-12360	1	15	1C03	1E1061-57300	8	13	1C14	1E1071-86010	11	1	1D03	121316-82352	7	6	1B09
1E1061-12650	1	16	1C03	1E1061-57501	8	14	1C14	1E1071-86070	11	2	1D03	121316-82353	7	7	1B09
1E1061-21010	2	1	1C05	1E1061-57560	8	15	1C14	1E1071-86100	11	4	1D03	121318-32504	1	9	1B03
1E1061-21030	2	2	1C05	1E1061-57600	8	16	1C14	1E4110-24010	4	1	1C08	121318-32505	10	3	1B12
1E1061-25011	3	1	1C06	1E1061-57640	8	17	1C14	1E4150-99260	12	2	1D04	121325-16052	2	7	1B04
1E1061-25050	3	2	1C06	1E1061-57650	8	18	1C14	1E4320-99120	8	28	1C14	121402-42183	6	1	1B08
1E1061-25060	3	3	1C06	1E1061-57700	8	19	1C14	1E4480-99150	1	20	1C03	121403-72127	11	13	1B13
1E1061-25070	3	4	1C06	1E1061-57730	8	20	1C14	1E6102-84970	8	26	1C14	121409-02032	1	10	1B03
1E1061-25110	3	5	1C06	1E1061-57740	8	21	1C14	1E6790-95471	8	27	1C14	121409-02033	5	1	1B07
1E1061-25140	3	7	1C06	1E1061-57750	8	22	1C14	1E6910-39640	3	22	1C06	121500-32227	8	1	1B10
1E1061-25150	3	8	1C06	1E1061-57850	8	23	1C14	160010-82850	8	25	1C14	12156R-06800	9	16	1B11
1E1061-25160	3	9	1C06	1E1061-57921	8	24	1C14	120016-06140	7	27	1B09	121600-92136	8	4	1B10
1E1061-25170	3	10	1C06	1E1061-61070	9	3	1C16	120056-06120	1	28	1B03	121602-02129	8	5	1B10
1E1061-25180	3	11	1C06	1E1061-61110	9	4	1C16	121108-05220	6	13	1B08	121602-52166	8	6	1B10
1E1061-25210	3	13	1C06	1E1061-61120	9	5	1C16	121100-42117	1	1	1B03	121604-12222	8	7	1B10
1E1061-25250	3	14	1C06	1E1061-61130	9	6	1C16	121100-82097	1	2	1B03	121604-12223	8	8	1B10
1E1061-25270	3	15	1C06	1E1061-61201	9	7	1C16	121100-92346	4	1	1B06	121604-12224	8	9	1B10
1E1061-25300	3	16	1C06	1E1061-61251	9	8	1C16	121101-22255	11	2	1B13	121606-02171	9	7	1B11
1E1061-25330	3	17	1C06	1E1061-61300	9	9	1C16	121101-22327	9	1	1B11	121607-32164	8	25	1B10
1E1061-25370	3	18	1C06	1E1061-61320	9	11	1C16	121101-32151	9	2	1B11	121607-32165	6	2	1B08
1E1061-25410	3	19	1C06	1E1061-63130	10	5	1D01	121101-32152	9	3	1B11	121612-62146	1	11	1B03
1E1061-25430	3	20	1C06	1E1061-63140	10	6	1D01	121102-22067	1	3	1B03	121612-62191	8	10	1B10
1E1061-25500	3	21	1C06	1E1061-86100	11	3	1D03	121104-62053	9	4	1B11	121616-92111	7	1	1B09
1E1061-31530	4	7	1C08	1E1061-86110	11	5	1D03	121106-02139	1	4	1B03	121617-12068	7	2	1B09
1E1061-31550	4	8	1C08	1E1061-86121	11	6	1D03	121106-02141	9	5	1B11	121618-32002	8	11	1B10
1E1061-31650	4	9	1C08	1E1061-86150	11	7	1D03	121106-02142	1	5	1B03	121726-06800	9	17	1B11
1E1061-31671	4	10	1C08	1E1061-86160	11	8	1D03	121106-02143	1	6	1B03	122108-32075	3	11	1B05
1E1061-31681	4	11	1C08	1E1061-86171	11	9	1D03	121106-02144	8	24	1B10	122111-92139	6	3	1B08
1E1061-31690	4	12	1C08	1E1061-86180	11	10	1D03	121106-02145	10	2	1B12	122113-02066	6	4	1B08
1E1061-31750	4	13	1C08	1E1061-86200	11	11	1D03	121106-02185	9	6	1B11	122116-92066	6	5	1B08
1E1061-35010	5	1	1C09	1E1061-86220	11	12	1D03	121106-02190	8	2	1B10	122117-12176	6	7	1B08
1E1061-35050	5	2	1C09	1E1070-86910	11	13	1D03	121106-02191	8	3	1B10	122119-42249	6	8	1B08
1E1061-35200	5	3	1C09	1E1071-12300	1	11	1C03	121200-42101	3	1	1B05	122148-04200	7	18	1B09

PART NO.	GRP. NO.	REF. NO.	LOC. NO.	PART NO.	GRP. NO.	REF. NO.	LOC. NO.	PART NO.	GRP. NO.	REF. NO.	LOC. NO.	PART NO.	GRP. NO.	REF. NO.	LOC. NO.
122148-05100	9	18	1811	129201-51193	7	23	1809	22190-080000	3	24	1C06				
122301-32058	8	12	1810		9	12	1811	22217-080000	7	2	1C13				
122601-12297	6	9	1808	129201-52253	3	15	1805			8	1C13				
123118-05000	6	16	1808	129202-21236	1	16	1803		8	31	1C14				
123900-32077	7	3	1809	129202-22372	7	10	1809	22242-000200	2	3	1C05				
123912-92054	7	4	1809	129202-62272	9	13	1811	22312-040080	3	25	1C06				
123918-02796	7	5	1809	129202-62273	5	4	1807	22312-040140	3	26	1C06				
124401-34820	6	10	1808	129203-32160	11	10	1813	22351-035025	3	27	1C06				
124401-51211	7	19	1809	129203-72209	7	11	1809	22351-050025	8	32	1C14				
124401-51350	7	24	1809	129203-82077	6	11	1808	22351-060025	3	28	1C06				
124401-53850	7	9	1809	129204-32168	3	12	1805	22372-060000	1	29	1B03				
124607-52082	11	6	1813	129204-91062	1	18	1803		7	28	1B09				
12482J-90000	1	27	1803	129204-92199	1	19	1803	22417-200120	1	22	1C03				
124901-52291	1	12	1803	129204-92204	1	20	1803		8	33	1C14				
124907-02491	9	8	1811	129204-92210	1	21	1803	22451-100160	3	29	1C06				
124907-82064	3	8	1805	129206-32242	8	15	1810	22522-040160	1	23	1C03				
124908-02166	11	14	1813	129206-42094	8	16	1810	22551-050250	3	30	1C06				
124908-82423	11	1	1813	129206-62180	4	5	1806	24104-062044	1	24	1C03				
124910-32127	7	20	1809	129207-01167	6	12	1808	24311-000070	3	31	1C06				
124910-62446	9	9	1811	129209-32100	8	17	1810	24321-001100	3	32	1C06				
124910-92054	10	4	1812	129210-72057	12	3	1814	26016-060122	6	5	1C11				
124911-02080	7	21	1809	129211-02093	12	4	1814	26016-060124	8	34	1C14				
124911-82110	3	9	1805	129214-32135	7	12	1809		10	8	1D01				
124912-06074	1	13	1803	129214-32148	7	13	1809	26018-080164	1	4	1C03				
125102-32160	10	5	1812	129214-42177	11	11	1813		4	15	1C08				
125104-82072	10	1	1812	129214-42266	7	14	1809	26022-040082	6	15	1B08				
125200-52094	4	3	1806	129214-42272	11	12	1813	26106-060122	1	23	1B03				
125501-42110	1	17	1803	129214-42315	3	13	1805	26106-080502	1	26	1B03				
12551A-03060	2	6	1804	129214-42316	7	15	1809	26107-080122	4	16	1C08				
12555A-05160	1	30	1803	129214-42329	7	25	1809	26107-080302	7	3	1C13				
125603-12375	12	1	1814	129214-42332	8	18	1810	26107-100352	1	2	1C03				
125603-12447	12	2	1814	129214-42333	8	19	1810	26117-060202	3	33	1C06				
125801-31220	2	9	1804	129214-42334	8	20	1810	26117-080122	3	34	1C06				
125905-12330	2	5	1804	129214-42335	8	21	1810	26138-100202	6	3	1C11				
125905-62790	1	14	1803	129215-02122	2	8	1804	26347-060002	3	35	1C06				
125910-12095	11	7	1813	129215-02152	9	14	1811	26367-060002	9	12	1C16				
125910-62126	11	8	1813	129215-02182	7	16	1809	26367-080002	5	10	1C09				
125922-62256	7	8	1809	129215-02248	3	16	1805		7	13	1C13				
125923-12077	4	4	1806	129215-02263	8	22	1810	26476-060202	3	36	1C06				
126677-68120	10	6	1812	129219-02112	1	22	1803	26476-060302	3	37	1C06				
126708-30320	9	20	1811	129219-02113	10	7	1812	26476-080162	1	25	1C03				
126700-20150	4	6	1806	129220-02029	7	26	1809		2	7	1C05				
126700-20160	4	7	1806	129220-02032	9	15	1811		3	38	1C06				
127270-84190	6	6	1808	129220-02037	5	5	1807		7	14	1C13				
129200-22269	7	22	1809	129220-02058	2	10	1804		9	13	1C16				
129200-42135	5	2	1807	129220-02061	8	23	1810		10	9	1D01				
129200-92166	1	15	1803	22117-050000	6	18	1808			10	1D01				
	9	10	1811	22137-050000	9	19	1811			11	1D01				
129200-92308	9	11	1811	22137-060000	1	21	1C03	26658-080002	8	35	1C14				
129200-92341	3	14	1805		3	23	1C06	26668-080002	7	4	1C13				
129200-92347	11	9	1813		8	29	1C14			9	1C13				
129200-92348	8	13	1810	22137-080000	5	9	1C09	26717-060002	3	39	1C06				
129200-92349	8	14	1810	22137-100000	8	30	1C14	26717-080002	5	11	1C09				
129201-51170	5	3	1807	22157-080000	4	14	1C08	26737-140002	6	17	1B08				



YANMAR AGRICULTURAL EQUIPMENT CO.,LTD.

1-32, Chayamachi, Kita-ku, OSAKA 530, JAPAN

Tel:06-376-6348 Cable:YANMAR OSAKA Telex:5233623